



## Product Data Sheet

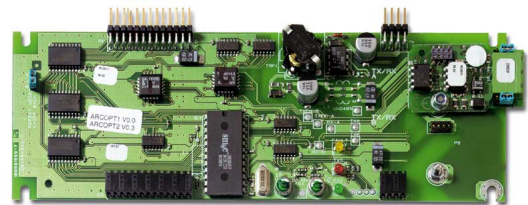
# NC2011

FP1200/2000 Series ARCNET RS485 Network Card with Single RS485 Interface

### General

---

The NC2011 is an interface board to connect an RS485 copper network directly into the 1200/2000 series fire panels. It is supplied with one NE2011 pre installed.



### Standard Features

---

- Allows a RS485 interface on the FP1200/2000
- No configuration required
- Supplied with nuts and washers for easy installation
- Full Class-A ring option available with NE2011
- Mixed network support (copper and fibre) with NE2051

# NC2011

## FP1200/2000 Series ARCNET RS485 Network Card with Single RS485 Interface

### Specifications

#### Electrical

Current consumption	50 mA
---------------------	-------

#### Environmental

Storage temperature	-10°C to +70°C
Operating temperature	-10°C to +50°C
Relative humidity	10% to 95%

#### Physical

Dimensions	190 x 64 mm
Weight	85 g

### Ordering Information

Part No.	Description
NC2011	FP1200/2000 Series ARCNET RS485 Network Card with Single RS485 Interface
NE2011	RS485 Network Extension Board

