



## Product Data Sheet

# FE570

Universal Door-magnet, adjustable

### General

The FE570 is a universal, adjustable door-magnet.

### A magnet for all occasions

The FE500 series door holding magnets are the result of years of specialised development. Rated at just 1.5 W @ 24VDC, these powerful magnets pack a holding power of 490N. All magnets have a spring-loaded pin to ensure ejection against remnant magnetism.

### Application friendly

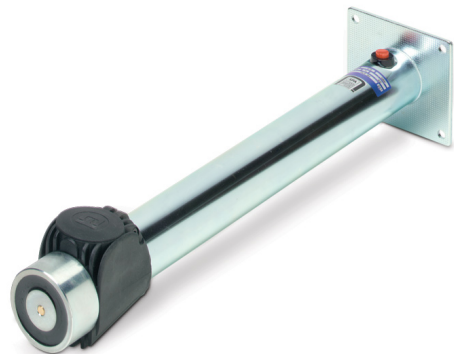
The FE500 series offer cost effective solutions without sacrificing performance. Reinforced aluminium gives it a smart look and rugged endurance, whilst the reinforced wall mount aluminium extensions allow covering of installation between the door and the wall. Keeper plates are not supplied with the magnet and can be ordered separately according to the application.

### Installer friendly

For practical ease of installation, all units are complete with electrical terminations. Protection diodes prevent electromagnetic pulses and provide reverse polarity protection, as well as speeds up installation. The mountings are predrilled in a practical, standard format for rapid mounting.

### Approvals

All models are VdS approved.



### Standard Features

- Strong body
- Floor mounting
- 490N holding force
- Push-off pin
- No remanent magnetism
- Low power - 1.5 W
- Reverse polarity protection
- VDS approval

# FE570

Universal Door-magnet, adjustable

## Specifications

Supply	24 VDC
Power (W)	1.5
Consumption (mA)	62.5
Holding force (N)	490
IP rating	42
Dimensions (mm)	-
Release button	Yes
Protection diode	Yes
Reverse polarity	Yes
Cable entry	-
VDS Coil	Yes

## Ordering Information

Part No.	Description
FE570	Universal Door-magnet, adjustable
FE527	Standard Anchorplate for FE500 series magnets
FE529	Swivel anchorplate for FE500 series doormagnets

