



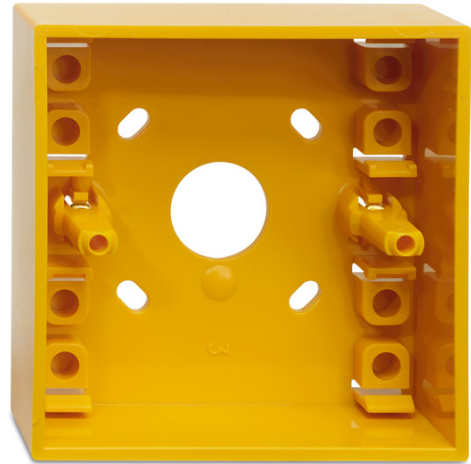
Product Data Sheet

DM788Y

Surface mount box without connectors, yellow

General

The DM788Y is a yellow back-box for the surface mounting of 700 series manual call points. The back box itself has no connection options.



Standard Features

- Easy to install
- For flush mounting of manual call points

DM788Y

Surface mount box without connectors, yellow

Specifications

Material	PC/ABS
Colour	Yellow
Operating temperature	-10°C to +55°C
Storage temperature	-10°C to +55°C
Relative humidity (non-condensing)	0-95%

Ordering Information

Part No.	Description
DM788Y	Surface mount box without connectors, yellow

