

TVFC-M01-0802-BUL-G

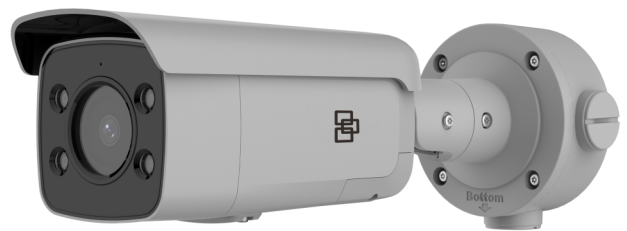
TruVision 4K/8MP Full color IP 2.8mm lens Bullet Camera, 60m white light, mic, speaker, strobe light

Overview

TruVision Full Color IP cameras offer a number of advantages over traditional IP cameras. The cameras available in 4 and 8 megapixel, capture full color video, allowing for clearer and more accurate identification of people and objects in the field of view. This is especially useful in low light conditions, where traditional IP cameras may produce footage that is difficult to interpret due to the lack of color.

The built-in supplemental white light available on most models, ensures that even in complete darkness, the cameras are able to capture clear and usable footage. This makes them ideal for use in a variety of settings, including outdoor areas or poorly lit indoor spaces.

Overall, this new range of TruVision Full Color IP Surveillance cameras are a reliable and advanced choice for any surveillance system, providing high quality, full color video footage that can aid in the identification and detection of potential threats or incidents.



Details

- Maximum resolution: 8MP/4K (3840 x 2160)
- 24/7 color images
- Built-in supplemental white light up to 60 m
- Person/vehicle classification
- Video intelligence: intrusion detection, cross line detection, entry/exit detection, face capture
- Built-in alarm strobe light, microphone, and speaker
- H.265+ compression
- ONVIF Profile G, S, T open standards
- Edge recording up to 256 GB SDHC card

TVFC-M01-0802-BUL-G

TruVision 4K/8MP Full color IP 2.8mm lens Bullet Camera, 60m white light, mic, speaker, strobe light

Technical specifications

| Geral | |
|------------------------|---|
| Technology | IP |
| Video standard | NTSC, PAL |
| Image settings | De-Fog, Hallway View, Mirror, ROI (Region Of Interest) |
| Privacy masking | Yes |
| Software compatibility | Milestone XProtect, TruVision Navigator, TVRmobile, Web Browser |

| Câmera | |
|-------------------|--------------------|
| Sensor size | 1/1.2" |
| Max. resolution | 8 MP (4K) |
| Sensor scan | Progressive |
| Sensor type | CMOS |
| Digital S/N ratio | ≥ 52 dB |
| Shutter time | 1/3 to 1/100,000 s |

| Desempenho de iluminação | |
|--------------------------|--|
| WDR | 130 dB |
| Digital noise reduction | 3D DNR |
| Color sensitivity | Color: 0.0005 Lux @ (F1.0, AGC ON), 0 Lux with white light |
| Infrared (IR) | No |

| Codificação | |
|--------------------------|---|
| Video streams | 3 |
| Main stream compression | H.264, H.264+, H.265, H.265+ |
| Sub stream compression | H.264, H.265, MJPEG |
| Third stream compression | H.264, H.265 |
| Video bit rate | 32 Kbps to 16 Mbps |
| Main stream resolutions | 1280 x 720 (XVGA), 1920 x 1080 (1080p), 2688 x 1520, 3200 x 1800, 3840 x 2160 |
| Sub stream resolutions | 1280 x 720 (XVGA), 640 x 360 (nHD), 640 x 480 (VGA) |
| Third stream resolutions | 1024 x 768 (XGA), 1280 x 720 (XVGA), 1280 x 960 (720p), 1920 x 1080 (1080p), 640 x 360 (nHD), 640 x 480 (VGA) |
| Max. resolution @ fps | 3840 x 2160 @ 25/30 fps |

| Lente | |
|--------------|--|
| Lens type | Fixed |
| Focal length | 2.8 mm, horizontal FoV 102°, vertical FoV 52°, diagonal FoV 124° |
| f-stop | F1.0 |
| Auto iris | No |

| DORI | |
|----------------|------|
| Detection | 96 m |
| Observation | 38 m |
| Recognition | 19 m |
| Identification | 9 m |

| Rede | |
|-----------------------------|--|
| Network interface | RJ-45 10/100 Mbps self-adaptive Ethernet interface |
| Integration | ONVIF Profile G, ONVIF Profile S, ONVIF Profile T |
| Supported network protocols | 802.1x, ARP, Bonjour, DDNS, DHCP, DNS, FTP, HTTP, HTTPS, ICMP, IGMP, IPv4, IPv6, NTP, PPPoE, QoS, RTCP, RTP, RTSP, SMTP, SNMP, SSL/TLS, TCP/IP, UPnP |

| Áudio | |
|-------------------|---|
| Audio compression | G.711alaw, G.711ulaw, G.722.1, G.726, MP2L2, PCM |
| Audio in | Built-in microphone and 1 input (line in), two-core terminal block, max. input amplitude: 3.3 Vpp, input impedance: 4.7 KΩ, interface type: non-equilibrium |
| Audio out | Built-in 2 W speaker and 1 output (line out), two-core terminal block, max. output amplitude: 3.3 Vpp, output impedance: 100 Ω, interface type: non-equilibrium |
| Audio bit rate | 64 Kbps (G.711ulaw/G.711alaw)/16 Kbps (G.722.1)/16 Kbps (G.726)/32 to 192 Kbps (MP2L2)/8 to 320 Kbps |

| I/O Alarme | |
|---------------|------------------------------------|
| Alarm inputs | 1 |
| Alarm outputs | 1 output (max. 24 VDC/24 VAC, 1 A) |

| Armazenamento | |
|-----------------------|---------------------------------------|
| Local storage type | Built-in Micro SD/SDHC/SDXC card slot |
| Max. SD card capacity | 256 GB |

| Inteligência de vídeo | |
|-----------------------|--|
| Alarm trigger | HDD error, HDD full, Invalid login, IP address conflict, Motion detection, Network disconnected, Video tampering |
| Smart event | Advanced motion detection, Face capture, Intrusion detection, Line crossing detection, Motion detection, Region entrance detection, Region exiting detection, Scene change detection |
| Intelligence options | Person/vehicle detection on motion, line crossing, intrusion detection and entry/exit detection only (when VCA resource mode Smart Event is enabled) |

| Elétrica | |
|-------------------|---|
| Operating voltage | 12 VDC ± 25%, 0.84 A, PoE: 802.3af, Class 3, 36 V to 57 V, 0.32 A to 0.21 A |
| Power consumption | max. 11.5 W |

TVFC-M01-0802-BUL-G

TruVision 4K/8MP Full color IP 2.8mm lens Bullet Camera, 60m white light, mic, speaker, strobe light

Físico

| | |
|---------------------|--|
| Physical dimensions | 289.9 × 93.5 × 91.2 mm 11.4 × 3.7 × 3.6 in. |
| Net weight | 1255 g 2.6 lb. |
| Shipping weight | 1769 g 3.7 lb. |
| Colour | Grey |
| Material | Aluminium |
| Form Factor | Bullet |

Ambiental

| | |
|-----------------------|-------------------------------|
| Environment | Outdoor |
| Operating temperature | -30 to +60°C -22 to +140°F |
| Relative humidity | <95% noncondensing |
| IP rating | IP67 |

Regulamentar

| | |
|------------|--------------------------------|
| Compliance | CE, FCC, REACH, RoHS, UL, WEEE |
|------------|--------------------------------|

Compatible Accessories

| | |
|--------------|--|
| TVD-M-PMA-SS | TruVision Pole Mount Adaptor (Stainless Steel) |
| TVD-M-CMA | TruVision Corner Mount Adapter |

Lighting performance

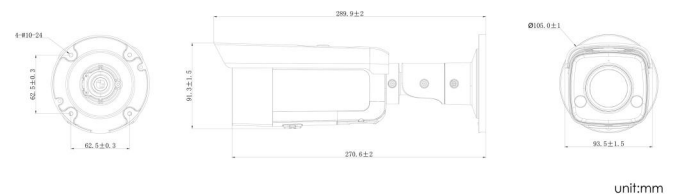
| | |
|--------------------|------------|
| White light | Yes |
| White light range | Up to 60 m |
| Alarm strobe light | Yes |

Encoding

| | |
|-------------------------|----------------------------|
| Third stream limitation | Supports only up to 10 fps |
|-------------------------|----------------------------|

General

| | |
|----------------------------------|---|
| Note regarding VCA resource mode | Third stream and Hallway View are not available in Smart Event and Face Capture mode. Standard Event mode supports these features but also disables the person/vehicle classification options for certain events. |
|----------------------------------|---|



As a company of innovation, Carrier Fire & Security reserves the right to change product specifications without notice. For the latest product specifications, visit firesecurityproducts.com online or contact your sales representative.

Last updated on 27 June 2023 - 15:10