

# TVFC-M01-0402-BUL-G

## TruVision 4MP Full color IP 2.8mm lens Bullet Camera, 60m white light, mic, speaker, strobe light

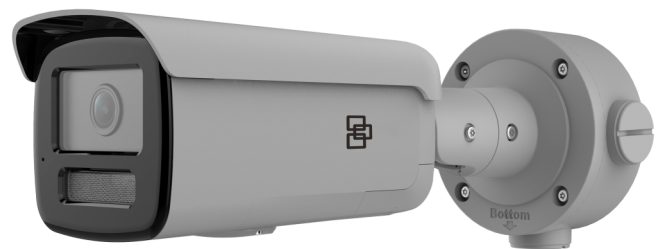
### Overview

---

TruVision Full Color IP cameras offer a number of advantages over traditional IP cameras. The cameras available in 4 and 8 megapixel, capture full color video, allowing for clearer and more accurate identification of people and objects in the field of view. This is especially useful in low light conditions, where traditional IP cameras may produce footage that is difficult to interpret due to the lack of color.

The built-in supplemental white light available on most models, ensures that even in complete darkness, the cameras are able to capture clear and usable footage. This makes them ideal for use in a variety of settings, including outdoor areas or poorly lit indoor spaces.

Overall, this new range of TruVision Full Color IP Surveillance cameras are a reliable and advanced choice for any surveillance system, providing high quality, full color video footage that can aid in the identification and detection of potential threats or incidents.



### Details

---

- Maximum resolution: 4MP (2688 x 1520)
- 24/7 color images
- Built-in supplemental white light up to 60 m
- Person/vehicle classification
- Video intelligence: intrusion detection, cross line detection, entry/exit detection, face capture
- Built-in alarm strobe light, microphone, and speaker
- H.265+ compression
- ONVIF Profile G, S, T open standards
- Edge recording up to 256 GB SDHC card

# TVFC-M01-0402-BUL-G

## TruVision 4MP Full color IP 2.8mm lens Bullet Camera, 60m white light, mic, speaker, strobe light

### Technical specifications

Geral	
Technology	IP
Video standard	NTSC, PAL
Image settings	De-Fog, Hallway View, Mirror, ROI (Region Of Interest)
Privacy masking	Yes
Software compatibility	Milestone XProtect, TruVision Navigator, TVRmobile, Web Browser

Câmera	
Sensor size	1/1.8"
Max. resolution	4 MP
Sensor scan	Progressive
Sensor type	CMOS
Shutter time	1/3 to 1/100,000 s

Desempenho de iluminação	
WDR	130 dB
Digital noise reduction	3D DNR
Color sensitivity	Color: 0.0005 Lux @ (F1.0, AGC ON), 0 Lux with white light
Infrared (IR)	No

Codificação	
Video streams	3
Main stream compression	H.264, H.264+, H.265, H.265+
Sub stream compression	H.264, H.265, MJPEG
Third stream compression	H.264, H.265
Video bit rate	32 Kbps to 8 Mbps
Main stream resolutions	1280 x 720 (XVGA), 1920 x 1080 (1080p), 2688 x 1520
Sub stream resolutions	1280 x 720 (XVGA), 640 x 360 (nHD), 640 x 480 (VGA)
Third stream resolutions	1280 x 720 (XVGA), 1280 x 960 (720p), 1920 x 1080 (1080p), 640 x 360 (nHD), 640 x 480 (VGA)
Max. resolution @ fps	2688 x 1520 @ 25/30 fps

Lente	
Lens type	Fixed
Focal length	2.8 mm, horizontal FoV 111.9°, vertical FoV 60.5°, diagonal FoV 133.6°
f-stop	F1.0
Auto iris	No

DORI	
Detection	58.2 m
Observation	23.1 m
Recognition	11.6 m
Identification	5.8 m

Rede	
Network interface	RJ-45 10/100 Mbps self-adaptive Ethernet interface
Integration	ONVIF Profile G, ONVIF Profile S, ONVIF Profile T
Supported network protocols	802.1x, ARP, Bonjour, DDNS, DHCP, DNS, FTP, HTTP, HTTPS, ICMP, IGMP, IPv4, IPv6, NTP, PPPoE, QoS, RTCP, RTP, RTSP, SMTP, SNMP, SSL/TLS, TCP/IP, UPnP

Áudio	
Audio compression	G.711alaw, G.711ulaw, G.722.1, G.726, MP2L2, PCM
Audio in	Built-in microphone and 1 input (line in), two-core terminal block, max. input amplitude: 3.3 Vpp, input impedance: 4.7 KΩ, interface type: non-equilibrium
Audio out	Built-in 2 W speaker and 1 output (line out), two-core terminal block, max. output amplitude: 3.3 Vpp, output impedance: 100 Ω, interface type: non-equilibrium
Audio bit rate	64 Kbps (G.711ulaw/G.711alaw)/16 Kbps (G.722.1)/16 Kbps (G.726)/32 to 192 Kbps (MP2L2)/8 to 320 Kbps

I/O Alarme	
Alarm inputs	1
Alarm outputs	1 output (max. 24 VDC/24 VAC, 1 A)

Armazenamento	
Local storage type	Built-in Micro SD/SDHC/SDXC card slot
Max. SD card capacity	256 GB

Inteligência de vídeo	
Alarm trigger	HDD error, HDD full, Invalid login, IP address conflict, Motion detection, Network disconnected, Video tampering
Smart event	Advanced motion detection, Face capture, Intrusion detection, Line crossing detection, Motion detection, Region entrance detection, Region exiting detection, Scene change detection
Intelligence options	Person/vehicle detection on motion, line crossing, intrusion detection and entry/exit detection only (when VCA resource mode Smart Event is enabled)

Elétrica	
Operating voltage	12 VDC, 0.67 A, max. 8 W PoE (802.3af, 36 V to 57 V), 0.25 A to 0.16 A
Power consumption	max. 9 W

# TVFC-M01-0402-BUL-G

TruVision 4MP Full color IP 2.8mm lens Bullet Camera, 60m white light, mic, speaker, strobe light

## Físico

Physical dimensions	289.5 × Ø105 mm 11.4 × Ø4.1 in.
Net weight	1165 g 2.6 lb.
Shipping weight	1639 g 3.6 lb.
Colour	Grey
Material	Aluminium
Form Factor	Bullet

## Ambiental

Environment	Outdoor
Operating temperature	-30 to +60°C -22 to +140°F
Relative humidity	<95% noncondensing
IP rating	IP67

## Regulamentar

Compliance	CE, FCC, REACH, RoHS, UL, WEEE
------------	--------------------------------

## Compatible Accessories

TVD-M-PMA-SS	TruVision Pole Mount Adaptor (Stainless Steel)
TVD-M-CMA	TruVision Corner Mount Adapter

## Lighting performance

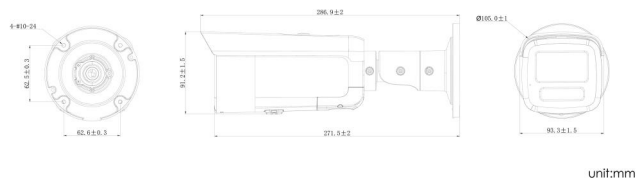
White light	Yes
White light range	Up to 60 m

## Encoding

Third stream limitation	Supports only up to 10 fps
-------------------------	----------------------------

## General

Note regarding VCA resource mode	Third stream and Hallway View are not available in Smart Event and Face Capture mode. Standard Event mode supports these features but also disables the person/vehicle classification options for certain events.
----------------------------------	---



As a company of innovation, Carrier Fire & Security reserves the right to change product specifications without notice. For the latest product specifications, visit [firesecurityproducts.com](https://firesecurityproducts.com) online or contact your sales representative.

Last updated on 27 June 2023 - 15:10