

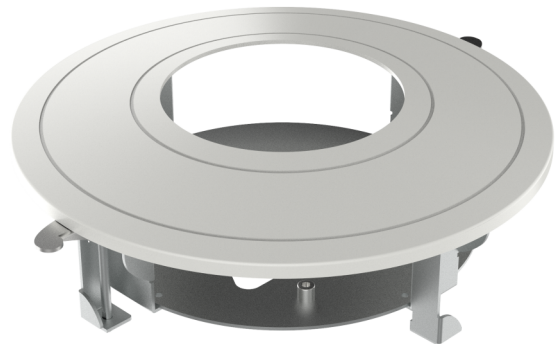
# TVD-VFM3-W

## TruVision flush mount for M Series varifocal dome IP cameras, white

### Overview

---

The TruVision TVD-VFM3-W Flush Mount bracket can be used to install the TruVision M series Varifocal IP dome cameras TVGP-M01-0202-DOM-W / TVGP-M01-0402-DOM-W / TVGP-M01-0802-DOM-W in a ceiling without leaving space between the camera and the surface of the ceiling.



### Details

---

- Steel and plastic materials with surface spray treatment
- Metal construction with magnetic trim ring
- Should only be used on a flat surface

# TVD-VFM3-W

TruVision flush mount for M Series varifocal dome IP cameras, white

## Technical specifications

### General

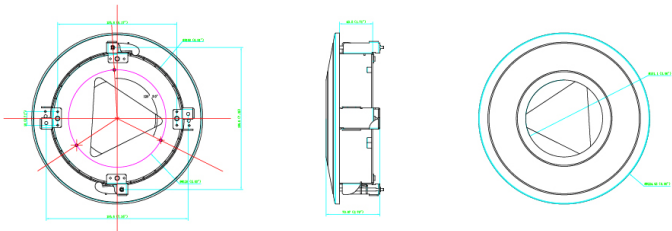
Bracket type	Camera
Camera support type	TruVision mini domes
Bracket mounting part	Mounting bracket
Mount type	Flush mount
Cable management	Yes

### Physical

Physical dimensions	Ø 225 x 75.9 mm
Net weight	609 g
Colour	White
Material	Steel

### Compatibility

Cameras	TVGP-M01-0202-DOM-W / TVGP-M01-0402-DOM-W / TVGP-M01-0802-DOM-W
---------	---



As a company of innovation, Carrier Fire & Security reserves the right to change product specifications without notice. For the latest product specifications, visit [firesecurityproducts.com](https://firesecurityproducts.com) online or contact your sales representative.