

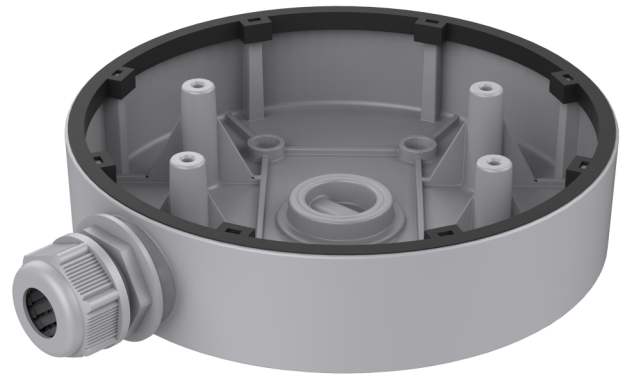
# TVD-BB4

## TruVision Back Box for S6 varifocal dome camera with cable harness

### Overview

---

The TruVision TVD-BB4 back box can be used to install Series 6 IP cameras TVD-5604H / TVD-5605H / TVD-5606H on a flat surface.



### Details

---

- Cable outlets at side and bottom
- Can be used indoor and outdoor
- Should only be used on a flat surface

# TVD-BB4

## TruVision Back Box for S6 varifocal dome camera with cable harness

### Technical specifications

---

#### General

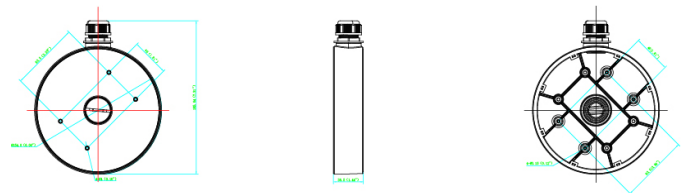
Bracket type	Camera
Camera support type	TruVision mini domes
Bracket mounting part	Mount connection box
Mount type	Surface mount

#### Physical

Physical dimensions	Ø 155 × 36 mm
Net weight	300 g
Colour	Grey (Pantone 428c)
Material	Aluminium

#### Compatibility

Cameras	TVD-5604H / TVD-5605H / TVD-5606H
---------	-----------------------------------



As a company of innovation, UTC Fire & Security reserves the right to change product specifications without notice. For the latest product specifications, visit UTC Fire & Security online or contact your sales representative.

Last updated on 19 May 2020 - 15:30

