

ASW367

Conventional Wall Mount Sounder/VAD, Multi Tone, Deep Base - Red Flash

General

The ASW367 is a RED, general purpose, wall mount, electronic sounder and beacon for fire alarm applications. It features a special base containing all wiring connections allowing for easy placement or removal of the device. With an EN54-23 approved coverage pattern of W-2.4-7.5 for the beacon, each ASW367 may be mounted up to 2.4m high and cover a square room of 7.5 x 7.5m with a single device.

Easy and Fast Installation

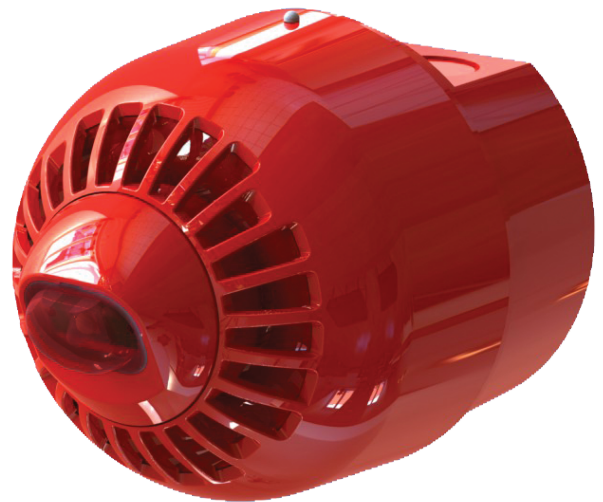
The ASx360 series alarm sounder/beacons allow faster installation and maintenance thanks to an innovative mounting base. Dispensing with the need for locking screws these devices use TimeSaver™ bases from the 630 series detector lines. Heads are simply locked onto the base with a “twist and click” action, allowing fitting or removal at any time because the base is the only component that needs to be wired. As the cabling requirement is reduced, commissioning time and costs are naturally reduced as well.

Efficient and versatile

The ASx360 series sounders provide high sound output at a low current, thus reducing power requirements and system cost. They are supplied with a volume control as standard, allowing final audio adjustments to be made during installation. With a choice of 32 different tones (see tones table in manual), which are switch selectable, the required tone can be selected during installation.

The ASx360 series beacons utilise a specially designed lens giving a uniformed light output over the specified coverage area.

The mechanism for locking the device to the base may be activated if required. Once activated, a special tool is required to remove the sounder from the base.



Details

- High sound output with Pulse Alert™ technology
- 32 Tones user selectable
- Automatic synchronisation
- Volume control and adjustable flash rate
- Anti-Tamper locking mechanism
- Deep mouting base with side cable entry and wiring to the base
- Weatherproof
- Seperate sounder and beacon and control
- EN54:3 and EN54:23 approved, CPR Certified

ASW367

Conventional Wall Mount Sounder/VAD, Multi Tone, Deep Base - Red Flash

Technical specifications

Electrical

Operating voltage 17 to 60 VDC

Physical

Physical dimensions 97.5 x 117 mm (Ø x D)

Net weight 215 g

Colour Red

Environmental

Operating temperature -25 to +70°C

Relative humidity 5 to 95% noncondensing

Environment Indoor, Outdoor

IP rating IP65

Standards & regulation

Certification EN54-23, EN54-3

Operation

Continuous

Current consumption

Sounder 5.1mA

Beacon 20mA @ 0.5 Hz

40mA @ 1 Hz

Sound output @ 1 m (tone dependant)

85 to 97dB(A)

Number of tones

32

Automatic synchronisation

Phased start

Line monitoring input

Polarised input

Housing

High impact polycarbonate

Flash colour

Red

EN54-23 rating

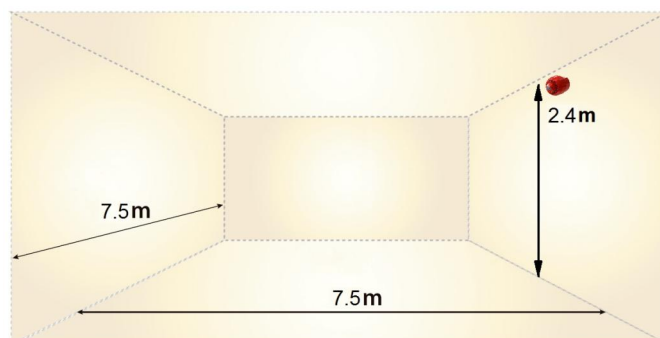
Light coverage W-2.4-7.5

Mounting position Wall

Mounting height up to 2.4 m

Floor coverage up to 7.5 x 7.5 m

EN54-23 Coverage: W-2.4-7.5



As a company of innovation, Carrier Fire & Security reserves the right to change product specifications without notice. For the latest product specifications, visit firesecurityproducts.com online or contact your sales representative.

Last updated on 4 November 2021 - 11:06