

TruVision Device Manager User Manual

Copyright	© 2014 United Technologies Corporation, Interlogix is part of UTC Building & Industrial Systems, a unit of United Technologies Corporation. All rights reserved.
Trademarks and patents	Trade names used in this document may be trademarks or registered trademarks of the manufacturers or vendors of the respective products.
Manufacturer	Interlogix, 2955 Red Hill Avenue, Costa Mesa, CA 92626-5923, USA Authorized EU manufacturing representative: UTC Fire & Security B.V. Kelvinstraat 7, 6003 DH Weert, The Netherlands
Contact information	For contact information, see www.interlogix.com or www.utcssecurityproducts.eu .
Customer support	www.interlogix.com/customer-support

Content

Description 2

Device Manager 2

Search for active devices online 2

Configure the device over the network 3

Check basic device information 3

Modify network parameters 3

Configure multiple devices 4

Restore the default password 4

FW upgrader 5

Access the user manual online 9

Information about the tool 9

Description

The TruVision Device Manager is a service kit for Interlogix TruVision IP devices including IP cameras, encoders, decoders, DVRs and NVRs. This manual explains how to use the TruVision Device Manager to find, configure online devices network related settings, and upgrade the device's firmware.

Device Manager

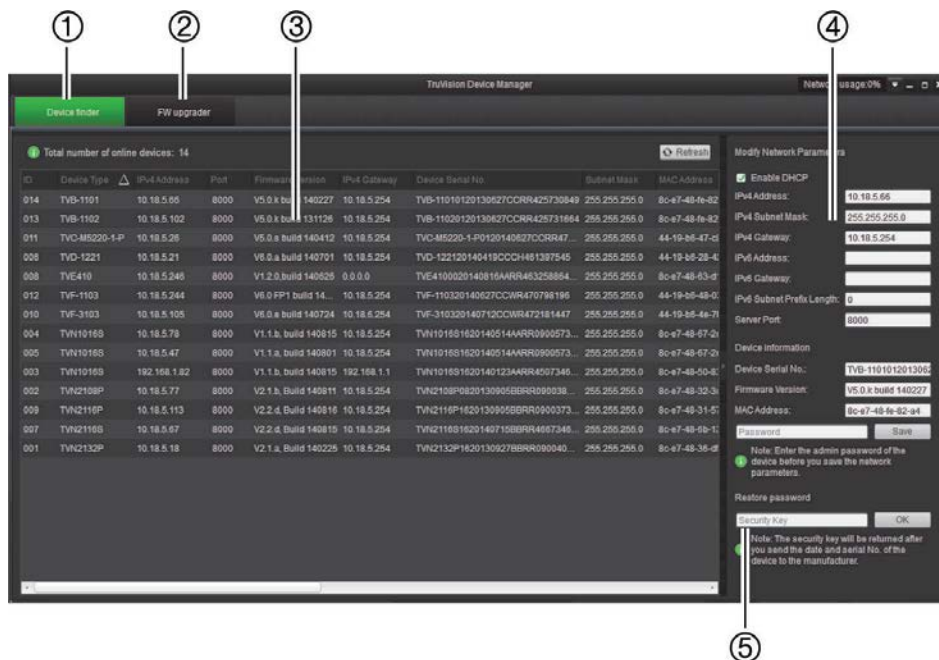
The TruVision Device Manager searches active online devices within your subnet and displays the device network information. You can also use this tool to modify the basic network information of the devices.

Search for active devices online

After launching the software, it automatically searches every 15 seconds for the online devices in the subnet of your computer. It then displays the information of the found devices under the Device Finder tab (see Figure 1 below).

The device information displayed includes the device type, IP address, port number, gateway, serial number, MAC address, etc.

Figure 1: TruVision Device Manager window



1. Device finder tab
2. FW upgrade tab
3. Device panel
4. Modify network parameters panel
5. Restore password

Note:

- Click **Refresh** to refresh the online device list manually. The newly found devices will be added to the list.
- Click the button on a column heading to sort the information.

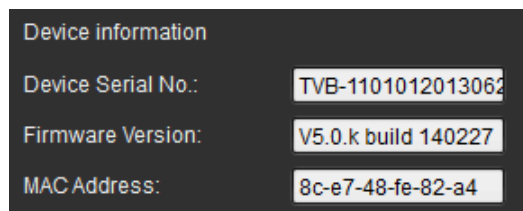
Configure the device over the network

When you move the mouse cursor in the device information panel (Figure 1 on page 2) onto the IP address of an online device, it will change to a finger shape. Double-click the IP address to open the device web browser and configure its setting over the network.

Check basic device information

To check the basic information of a device, select the desired device in the device panel (Figure 1 on page 2). The information is then displayed in the **Device information** panel (see Figure 2 below). It shows the serial number, firmware version, and MAC address. You cannot change this information.

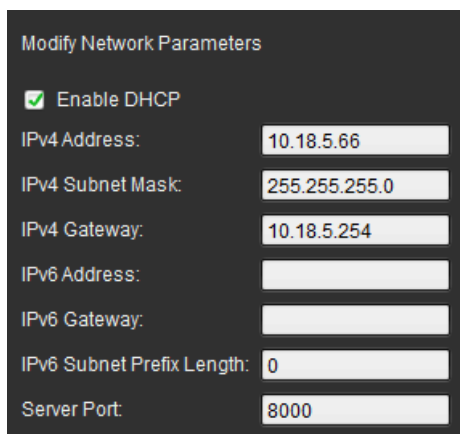
Figure 2: Device information panel



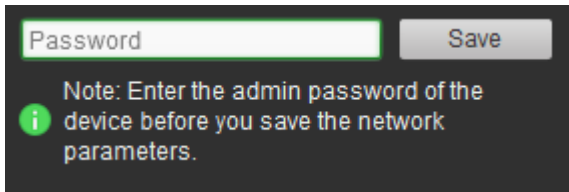
Modify network parameters

To configure the basic network parameters:

1. In the device panel, select the device to be modified from the list.
2. In the **Modify Network Parameters** panel, change the following network parameters: IP address, subnet mask, gateway, and port number.



3. In the Password field, enter the password of the device's admin account, and click **Save** to save the changes.



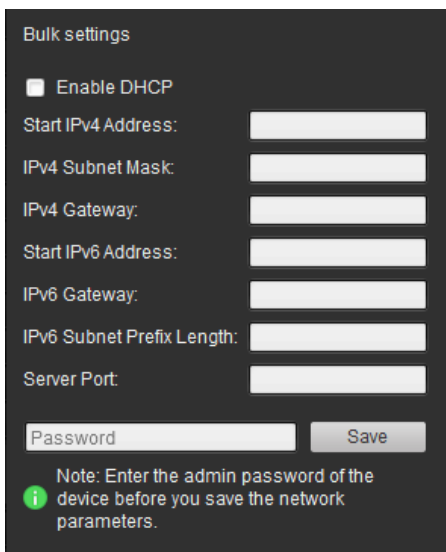
A screenshot of a web interface showing a 'Password' input field with a green border, a 'Save' button, and a note icon (i) with the text: 'Note: Enter the admin password of the device before you save the network parameters.'

Configure multiple devices

If you have multiple devices that need to be configured, you can use the bulk setting feature to set the IP addresses quickly.

To configure multiple devices:

1. In the device panel, click and drag the mouse, or hold the Ctrl button, to select all the desired devices.
2. In the **Bulk settings** panel on the left of the device panel, enter the **Start IPv4** or IPv6 address of the first device.



A screenshot of the 'Bulk settings' panel. It includes a checkbox for 'Enable DHCP', and input fields for 'Start IPv4 Address:', 'IPv4 Subnet Mask:', 'IPv4 Gateway:', 'Start IPv6 Address:', 'IPv6 Gateway:', 'IPv6 Subnet Prefix Length:', and 'Server Port:'. At the bottom, there is a 'Password' input field, a 'Save' button, and a note icon (i) with the text: 'Note: Enter the admin password of the device before you save the network parameters.'

The IP addresses of the other selected devices will automatically be populated with sequential IP addresses.

3. Click **Save** to save the changes.

Restore the default password

If you lose the password of a device, contact Technical Support to restore the password.

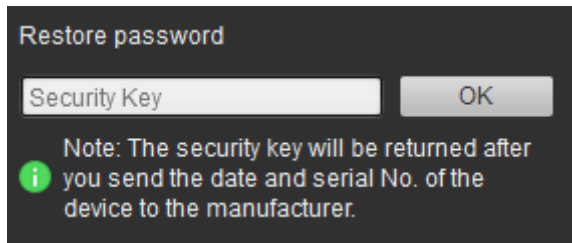
To restore the default password:

1. Contact Technical Support of the device manufacturer and give them the serial number as well as the date and time currently displayed on the device.

Copy the serial number from the **Device Serial No.** field in the Device Information section (see Figure 2 on page 3) pasted into an email to send to Technical Support.

Technical Support will send you a security key by email.

2. Enter the security key received from Technical Support in the **Restore Password** field and click **OK** to restore the default password. The default password is 1234.



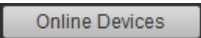
Note:

- The security key provided to you is related to the date that you sent to Technical Support and will expire after the day specified. If you did not specify the current date in your request, Technical Support will send you the security key valid for three days following your request.

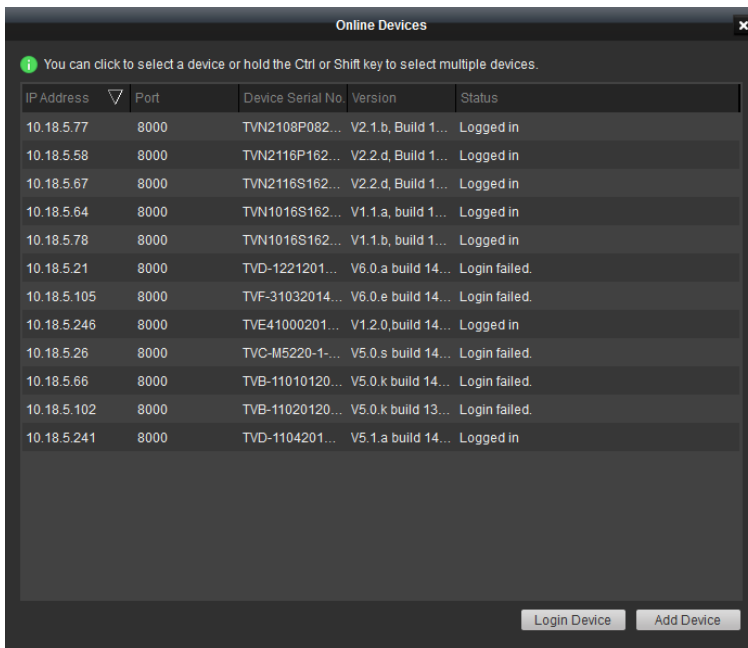
FW upgrader

Use the FW upgrader feature to upgrade the firmware of the selected device or devices. First select the devices that need their firmware upgraded by searching online devices or by adding an IP address or an IP address segment. Then choose the firmware file to upgrade the selected devices.

To select devices for firmware upgrade:

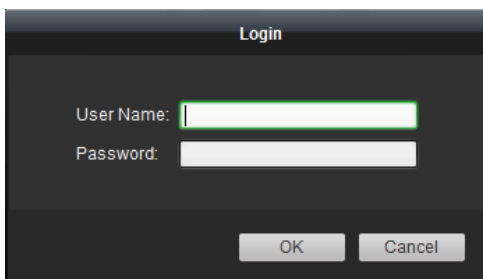
1. Click the **FW upgrade** tab. In its panel click  The Online Devices interface appears.

All the active online devices within the same subnet are listed.



2. Select the desired device.

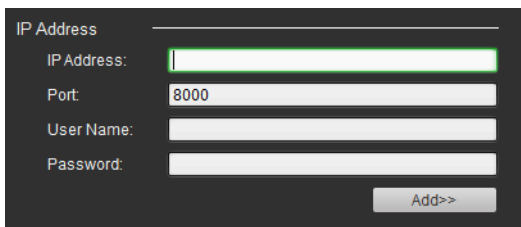
Click a device to select it or hold the Ctrl or Shift key to select multiple devices. Then click **Login Device**. The Login dialog box appears.



3. Enter the user name and password, and click **OK** to save the settings.

To select devices for firmware upgrade by IP address:

1. Click the **FW upgader** tab.
2. In its panel, click **Manual**. The Search window pops up.
3. In the IP Address panel of the Search window, enter the IP address, port, user name, and password of the device.



4. Click **Add** to add the device to the upgrading device list for upgrading.
5. In the IP Segment panel, enter the start IP address, end IP address, port, user name, and password to search for applicable devices.

IP Segment

Start IP:

End IP:

Port:

User Name:

Password:

- Click **Add** to start the search. Devices whose IP addresses are between the start and end IP addresses are added to the upgrading device list.

To add bookmarks:

- In the Bookmark panel, click **Add** to add a bookmark.

The screenshot shows the TruVision Device Manager interface. The 'FW upgrader' tab is active. Below the 'Device List' are tabs for 'Online Devices' and 'Manual'. A table lists devices with columns for IP Address, Port, Device Serial No., Version, and Upgrade Status. To the right of the table is a 'Bookmark' panel with an 'Add' button highlighted in red. At the bottom, there are fields for 'Upgrade Method' (set to 'Upgrade by File') and 'Select Path' (set to 'F:\UTC\Product\IP Camera\Amb\Firmware\Amb_5.0.k_140227.dav').

IP Address	Port	Device Serial No.	Version	Upgrade Status
10.18.5.77	8000	TVN2108P0820130905GBRR090038065WCVU	V2.1.b, Build 140811	Not upgraded
10.18.5.58	8000	TVN2116P1620130905GBRR090037347WCVU	V2.2.d, Build 140819	Not upgraded
10.18.5.67	8000	TVN2116S1620140715GBRR466734685WCVU	V2.2.d, Build 140818	Not upgraded
10.18.5.64	8000	TVN1016S1620140514AARR090057369WCVU	V1.1.a, build 140805	Not upgraded
10.18.5.78	8000	TVN1016S1620140514AARR090057365WCVU	V1.1.b, build 140815	Not upgraded
10.18.5.67	8000	TVN2116S1620140715GBRR466734685WCVU	V2.2.d, Build 140818	Not upgraded
10.18.5.67	8000	TVN2116S1620140715GBRR466734685WCVU	V2.2.d, Build 140818	Not upgraded
10.18.5.67	8000	TVN2116S1620140715GBRR466734685WCVU	V2.2.d, Build 140818	Not upgraded
10.18.5.67	8000	TVN2116S1620140715GBRR466734685WCVU	V2.2.d, Build 140818	Not upgraded
10.18.5.241	8000	TVD-110420130627CCWR425721396	V5.1.0 build140707	Upgraded



- In the pop-up window, enter the bookmark name, and select the upgrade method and file path. Click **OK** to save the settings.

Add

Name:

Upgrade Method:

Select Path:

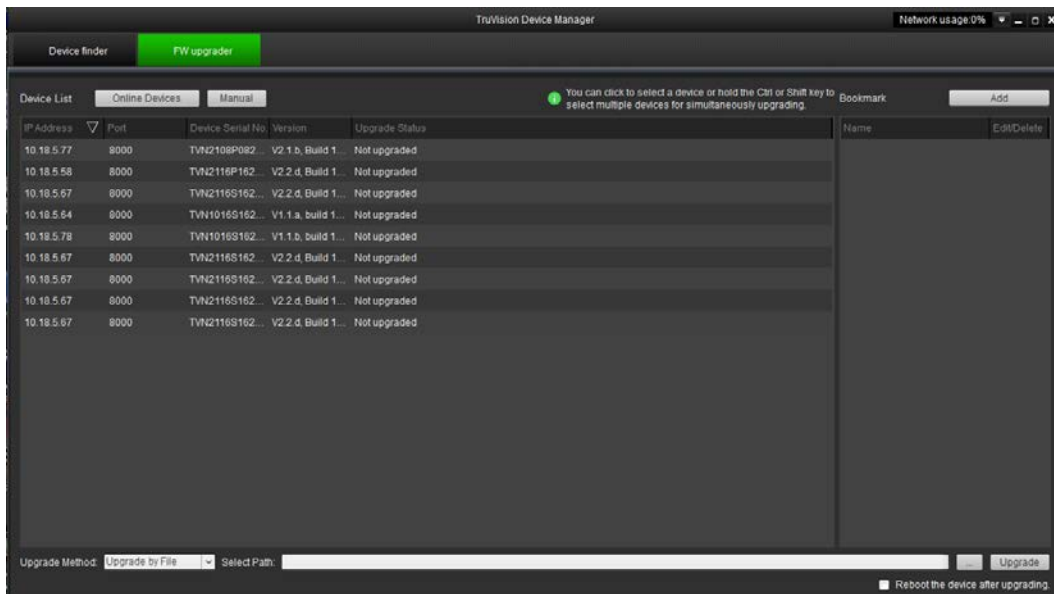
- In the Bookmark panel, click  to modify the bookmark. Click  to delete the bookmark.



4. Select a device or hold the Ctrl or Shift key to select multiple devices, then select a bookmark and click **Upgrade** to upgrade the device(s).

To upgrade the firmware:

1. In the FW upgrader panel, select a device or hold the Ctrl or Shift key to select multiple devices.

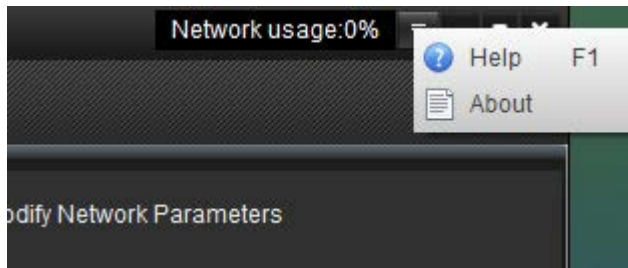


2. Click to choose the upgrade file or the pre-defined bookmark.
Before you click the Upgrade button, you can check the checkbox **Reboot the device after upgrading** to reboot the device. When you check this option, it will also display **Restore default settings** option. Check it if you want to restore all parameters.
3. When upgrading is completed, you can see the updated version information of the device(s) in the device list.

IP Address	Port	Device Serial No.	Version	Upgrade Status
10.18.5.77	8000	TVN2108P082...	V2.1.b, Build 1...	Not upgraded
10.18.5.58	8000	TVN2116P162...	V2.2.d, Build 1...	Not upgraded
10.18.5.67	8000	TVN2116S162...	V2.2.d, Build 1...	Not upgraded
10.18.5.64	8000	TVN1016S162...	V1.1.a, build 1...	Not upgraded
10.18.5.78	8000	TVN1016S162...	V1.1.b, build 1...	Not upgraded
10.18.5.67	8000	TVN2116S162...	V2.2.d, Build 1...	Not upgraded
10.18.5.67	8000	TVN2116S162...	V2.2.d, Build 1...	Not upgraded
10.18.5.67	8000	TVN2116S162...	V2.2.d, Build 1...	Not upgraded
10.18.5.241	8000	TVD-1104201...	0%	Upgrading...

Access the user manual online

Click the icon at the top to open the User Manual of the software. You can also press F1 to open it.



Information about the tool

Click **About** to check the version number and manufacturer information.

