



# TruVision Device Manager User Manual

<b>Copyright</b>	© 2017 United Technologies Corporation, Interlogix is part of UTC Climate, Controls & Security, a unit of United Technologies Corporation. All rights reserved.
<b>Trademarks and patents</b>	Trade names used in this document may be trademarks or registered trademarks of the manufacturers or vendors of the respective products.
<b>Manufacturer</b>	Interlogix, 2955 Red Hill Avenue, Costa Mesa, CA 92626-5923, USA Authorized EU manufacturing representative: UTC Fire & Security B.V. Kelvinstraat 7, 6003 DH Weert, The Netherlands
<b>Contact information</b>	For contact information, go to: <a href="http://www.interlogix.com">www.interlogix.com</a> or <a href="http://www.firesecurityproducts.com">www.firesecurityproducts.com</a> .
<b>Customer support</b>	<a href="http://www.interlogix.com/support">www.interlogix.com/support</a>

# Content

**Description 2**

**Installation prerequisites 2**

**Installation 2**

**Activate an inactive device 3**

**Device discovery 4**

Search for active devices online 4

Add device 5

**Device Manager tools 5**

Change IP address 5

Reset password 6

Manual firmware update 7

Storage calculator 8

Device configuration backup and restore 8

Upload camera information 9

Change password 10

**Storage calculator 10**

**Access the user manual online 11**

# Description

The TruVision® Device Manager is standalone software that can discover Interlogix IP devices such as IP cameras, DVRs, NVRs, encoders, decoders, IFS switches, and TruPortal access panels on a network.

This manual explains how to use the TruVision Device Manager to find and configure network-related settings of TruVision devices, and to upgrade the firmware of individual devices or perform a bulk upgrade.

# Installation prerequisites

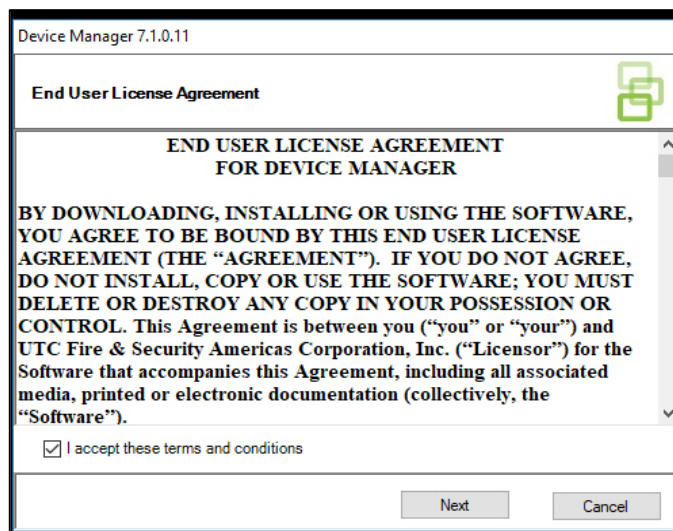
For each Windows computer running Microsoft Windows XP Pro or later operating systems:

- Download the latest operating system service pack from the Microsoft Download Center.
- Check for Windows updates at <http://update.microsoft.com>.
- Download the latest video driver.

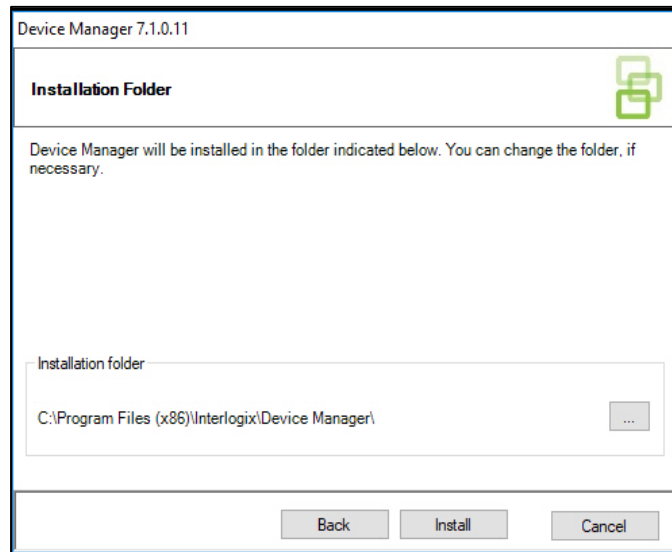
# Installation

To install TruVision Device Manager:

1. Double-click the TruVision Device Manager Setup.exe installer to begin the installation.
2. If necessary, click **Yes** in the User Account Control window to make changes to the computer.
3. The End User License Agreement window appears. Select the **I Accept these terms and conditions** check box and then click **Next** to continue.



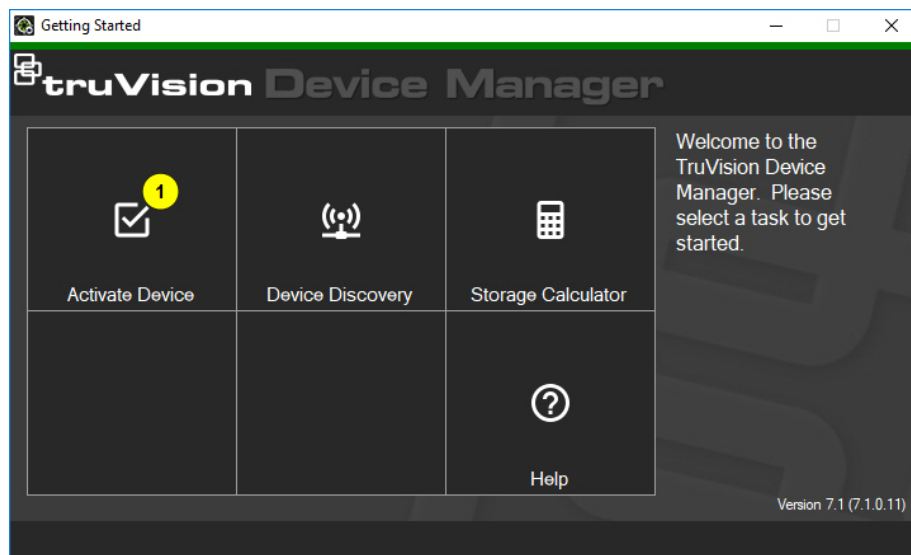
4. The Installation Folder window appears. Accept the default installation folder or click ... to select a different location and then click the **Install** button.



5. Click **Close** to complete the installation.

## Activate an inactive device

After launching Device Manager, the number of inactive TruVision devices (devices recently connected to the network) appears in the **Activate Device** button.



### To activate an inactive device:

1. Launch Device Manager and click **Activate Device** in the Getting Started window. A list of inactive devices appears in the Device Activation/Change IP Address screen.
2. Follow the steps under "Change IP address" on page 5.

3. An activate device success message appears.

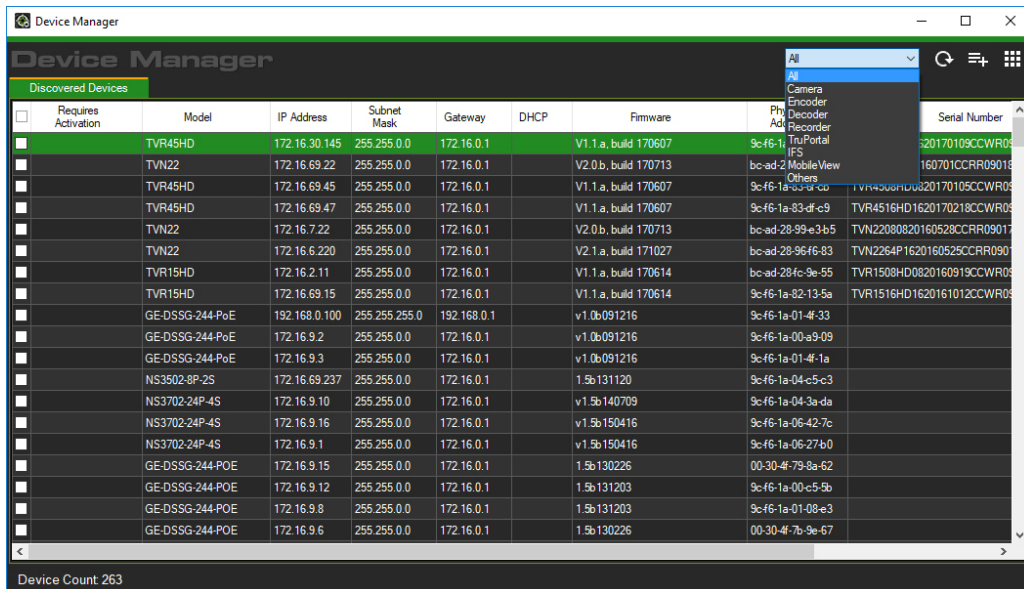
## Device discovery

Device Manager searches for online devices within the local network and displays network information for the devices. It automatically searches every 15 seconds for the online devices in the computer's local network and then displays the information for the found devices.

**Note:** Unmanaged devices do not support the discovery feature.


### Search for active devices online

After launching Device Manager, click the **Device Discovery** button in the Getting Started window. The Device Manager window appears.



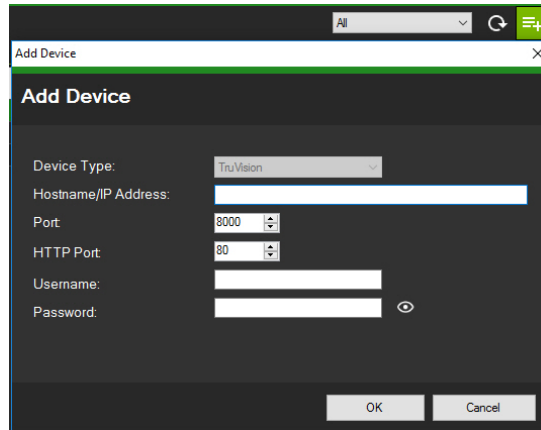
The device information that appears in the **Discovered Devices** tab includes the device type, IP address, port number, gateway, firmware version, serial number, MAC address, etc. Discovery results can be filtered by making a selection from the device filter drop-down list (**Camera**, **Recorder**, **TruPortal**, etc.)

**Note:**

- Click the **Refresh** button to perform a new search for online devices. When the **Refresh** button appears with a yellow dot, it indicates that new devices have been added in the background. Click  to add the newly found devices to the list.
- Click on a column heading button to sort the information.

## Add device

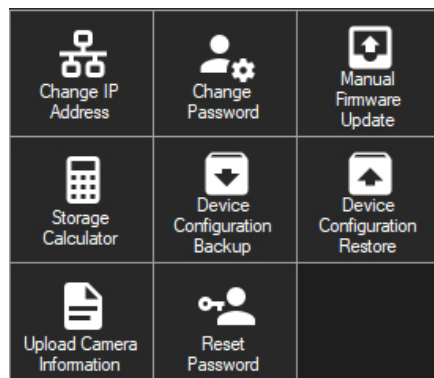
If a TruVision IP device connected to the network does not appear in the Device Manager's list of discovered devices, it can be added by clicking the **Add Device** button.



Type in the appropriate device location information along with the device's user name and password, and then click **OK**.

## Device Manager tools

Click the **Device Manager Tools** button  in the Device Manager window to access the tools.



## Change IP address

1. Click the **Change IP Address** tool button to bring up the Device Activation / Change IP Address window.
2. Select one or more devices to continue with setup. If multiple devices are selected, IP addresses are automatically assigned in sequence (in this case, all devices must have the same password). Select individual devices to assign specific IP addresses to each. Type in a new IP address, subnet, and gateway manually or click on an IP address to use default settings.
3. Click **Test**

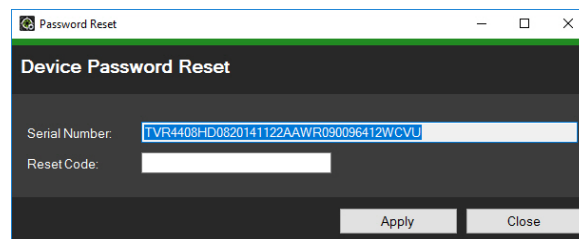
4. If the IP addresses were recognized as available, click **Apply**.
5. Click **Yes** to change the IP address for the selected devices.

## Reset password

If an admin (not a specific user) device password is lost, contact Technical Support to restore the password. There are two ways to restore the password. The method to be used depends on the device and its currently installed firmware.

### To restore the default password (method 1):

1. Select the device for password reset in the main Device Manager window.
2. Click **Device Manager Tools**, and then click the **Reset Password** tool button.
3. Copy the serial number from the **Device Serial No.** field in the Device information panel and paste it into an email to send to Technical Support. Technical Support will provide a security key by email.



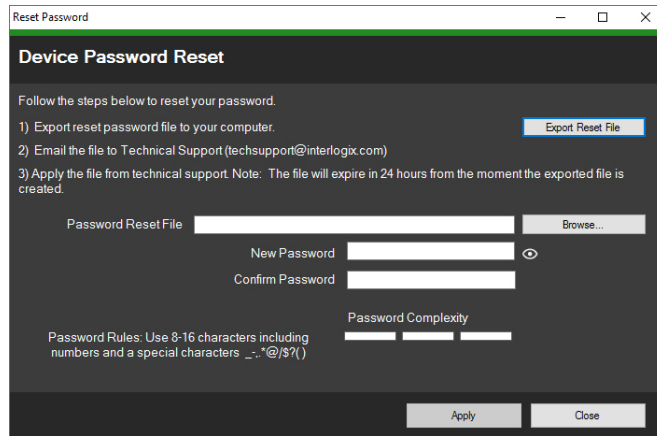
4. Enter the security key received from Technical Support in the **Security Code** field and click **OK** to restore the default password. The default password is **1234**.

**Note:** The security key provided is related to the date the serial number was sent to Technical Support and expires after the day specified. If the current date was not specified in the request, Technical Support provides a security key valid for three days following the date of the request.

### To set a new password using an XML file (method 2):

1. Select the device for password reset in the main Device Manager window.
2. Click **Device Manager Tools**, and then click the **Reset Password** tool button.
3. Click the **Reset Password** button.





4. Click **Export Reset File** in the Reset Password window to save the XML file, and then email the file to Technical Support. Technical Support will provide a new XML file.
5. Save the XML file received from Technical Support on the computer, click **Browse**, and select the new XML password file.
6. Type a new password and then confirm it in the **New Password** and **Confirm Password** fields. Click **Apply**.

**Note:** Do not restart the device after the password recovery XML file has been exported, otherwise the steps above must be repeated. The password recovery XML file expires after 24 hours.

## Manual firmware update

Before following these instructions, ensure that the firmware update file has already been downloaded to the local computer.

### To perform a manual firmware update:

1. Select one or more devices for firmware update in the main Device Manager window.
2. Click **Device Manager Tools**, and then click the **Manual Firmware Update** tool button. The Firmware Upgrade window appears.
3. Click **Browse** to locate the firmware file, and then type in the user name and password for the highlighted device in the Device List.
4. Click **Add** to add the highlighted device to the Tasks Summary list, or click **Add All** to add all the devices in the Device List to the Tasks Summary list.
5. Click **Apply**, and then click **Yes** to start the firmware upgrade process.
6. Firmware upgrade progress appears in the Firmware Upgrade window. When upgrading is complete, the updated version information of the device(s) appear in the device list.

## Storage calculator

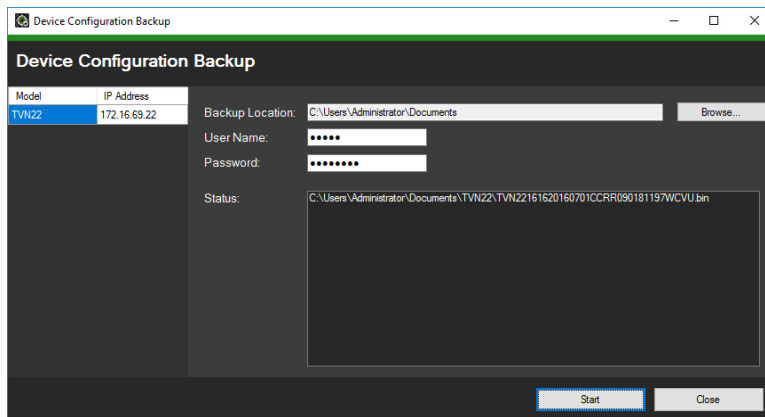
Select one or more devices in the main Device Manager window, click **Device Manager Tools**, and then click the **Storage Calculator** tool button. See “Storage calculator” on page 10 for details about the storage calculator.

## Device configuration backup and restore

Use these tools to backup and restore device configurations.

### To back up a device configuration:

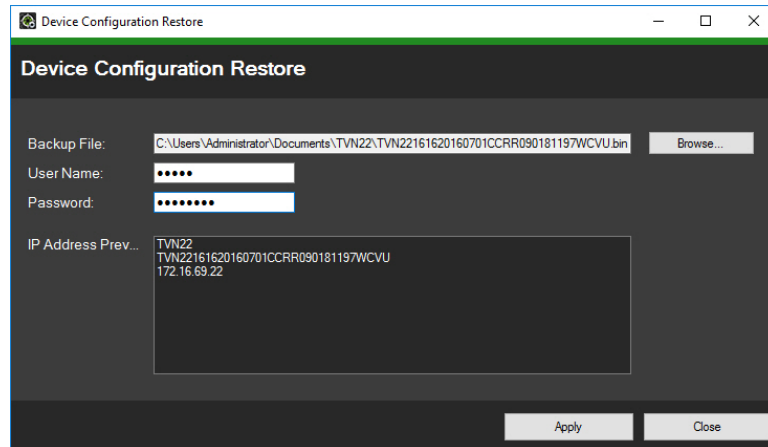
1. Select a device in the main Device Manager window, click **Device Manager Tools**, and then click the **Device Configuration Backup** tool button.
2. If required, click **Browse** to select a new backup location.
3. Enter the device user name and password and select **Start** to begin the backup process.



4. Click **Close** when backup is complete.

### To restore a device configuration:

1. Select a device in the main Device Manager window, click **Device Manager Tools**, and then click the **Device Configuration Restore** tool button.
2. If required, click **Browse** to select the location of the backup file.
3. Enter the device user name and password and click **Apply**.



4. Click **Yes** to restore the device configuration.

## Upload camera information

Use this tool to restore the device configuration for cameras only.

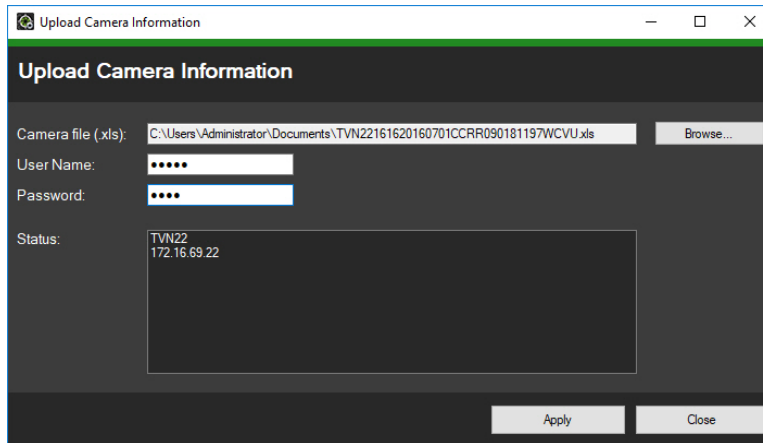
**Note:** Not all cameras support this feature.

The list of recorders that can upload camera information is as follows:

- TVN21
- TVN22
- TVN70
- TVN71
- TVR15HD
- TVR45HD

### To upload camera information:

1. Select a supported recorder in the main Device Manager window, click **Device Manager Tools**, and then click the **Upload Camera Information** tool button.
2. Click **Browse** to select the location of the configuration file.
3. Type in the recorder user name and password and click **Apply**.



4. Click **Yes** to upload the camera information.

## Change password

1. Select one or more devices the main Device Manager window (if multiple devices are selected, all must have the same password), click **Device Manager Tools**, and then click the **Change Password** tool button.
2. Type the correct information in the **Old Password**, **New Password**, and **Confirm Password** fields.
3. Click **Apply**.

## Storage calculator

Storage calculator is a tool that permits the creation of a storage capacity requirement report for TruVision recorders that can be printed or exported to Microsoft Excel (XLS file format).

**Note: Storage requirement calculations provided by the calculator are only an estimation based on medium quality video settings. More storage capacity could be needed depending on the scene complexity of images captured by the cameras.**

**Note:** Storage calculator only supports the TruVision recorders listed in the **Recorder** drop-down list in the TruVision Storage Calculator window.

**To generate a storage calculator report:**

1. After launching Device Manager, click the **Storage Calculator** button in the Getting Started window or select one or more devices in the main Device Manager window, click **Device Manager Tools**, and then click the **Storage Calculator** tool button.
2. Type a value into the **Project Name** field.
3. Select the recorder model from the **Recorder** drop-down list.
4. Select the number of camera channels in the **Channels** drop-down list.

- Type camera names into the Camera Name fields as necessary and enter values for each camera in the Main Stream and Substream (if applicable) sections. Use the **Copy Channel 1 Settings**, **From Channel**, and **Range** fields to copy values between cameras.
- The Storage per day (GB) columns and the **Total Storage per Day** and **Total Storage Capacity** fields populate with storage requirement calculations. When finished configuring the storage calculator project, click the **Print Report** or **Export to Excel** button to generate a storage calculator report for future reference.

The screenshot displays the TruVision storage calculator interface. At the top, the project name is 'Video Lab Setup', the recorder is 'TVR22P', and there are 18 channels. The interface is divided into 'Main Stream' and 'Substream' sections. A table lists two channels with their respective configurations. Below the table, summary statistics are provided, including total storage per day, days to store, total storage capacity, and total bandwidth usage. A 'Copy Channel 1 Settings' panel is visible on the right, and buttons for 'Print Report' and 'Export to Excel' are at the bottom.

Input channel	Camera Name	IP Address	Port	Username	Password	Video Encoding	Resolution	Frame Rate	Bitrate kbps	Motion %	Quality	Video Encoding	Resolution	Frame Rate	Bitrate kbps	Storage per day (GB)
Channel 1	EVB-5502	172.16.51.8	8000	admin	admin	H264	3840*2160	15	3216	100	Medium	H264	3820*2140 (CF/1X)	15	154	101.196
Channel 2	EVB-8101	172.16.51.7	8000	admin	admin	H264	1920*1080 (1080P)	15	2458	100	Medium	H264	3520*2140 (CF/1X)	20	205	29.780

Summary Statistics:  
 Total Storage per Day: 129,896 GB  
 Days to Store: 30  
 Total Storage Capacity: 3,899 TB  
 Total Bandwidth Usage: 12 Mbps  
 Note: The results are only an estimate, actual results may differ based on scene variables.

## Access the user manual online

Click the **Help** button in the Getting Started window to open the Device Manager user manual.