

NS3500-24T-4C Quick Installation Guide

Figure 1: NS3500-24T-4C L2+ Gigabit Managed Switch



Package contents

Thank you for purchasing the NS3500-24T-4C IFS L2+ Gigabit Ethernet managed switch, which comes with multiple RJ45 copper ports suitable for a Gigabit Ethernet switch with SFP fiber optic connectivity and robust layer 2 and layer 4 features. The descriptions of this model are as follows:

- L2+ 24-Port 10/100/1000BASE-T
- + 4-Port Shared SFP Managed Switch

Unless specified, the term “managed switch” mentioned in this quick installation guide refers to the NS3500-24T-4C.

Open the box of the managed switch and carefully unpack it. The box should contain the following items:

- The managed switch × 1
- Quick installation guide × 1
- CD with user manual × 1
- RS232 DB9 female console cable × 1
- Rubber feet × 4
- Two rack-mounting brackets with attachment screws × 1
- Power cord × 1
- SFP dust-proof cap × 4

If any of these are missing or damaged, contact your dealer immediately. If possible, retain the carton including the original packing materials for repacking the product in case there is a need to return it to us for repair.

Requirements

The managed switch provides a remote login interface for management purposes. The following equipment is necessary for further management:

- Workstations running Windows® XP / 2003 / Vista / 7 / 8 / 2008 / 10, MAC OS X or later, Linux, UNIX, or other platforms are compatible with TCP/IP protocols.

- Workstations are installed with Ethernet NIC (Network Interface Card)
- **Serial port connection (Terminal)**
 - The above workstations come with a COM Port (DB9) or USB-to-RS232 converter.
 - The above workstations have been installed with a terminal emulator, such as Hyper Terminal included in Windows XP/2003.
 - **Serial cable** – One end is attached to the RS232 serial port, and the other end is attached to the console port of the managed switch.
- **Ethernet port connection**
 - Network cables – Use standard network (UTP) cables with RJ45 connectors.
 - The above workstations have a Web browser and JAVA runtime environment plug-in installed.

Note: We recommend using Internet Explorer 8.0 or later to access the managed switch. If the web interface of the managed switch is not accessible, turn off the anti-virus software or firewall and then try it again.

Terminal setup

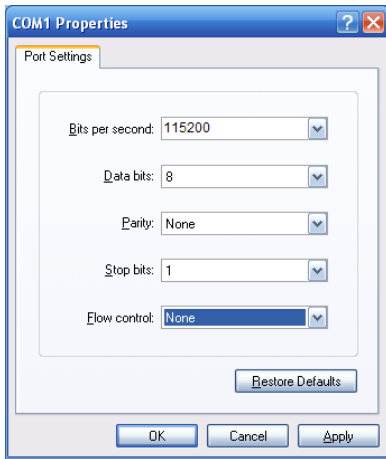
To configure the system, connect a serial cable to a COM port on a PC or notebook computer and to an RS232 type serial port on the managed switch.

Figure 2: Console connectivity



A terminal program is required to make the software connected to the managed switch. Windows' Hyper Terminal program may be a good choice. The Hyper Terminal can be accessed from the **Start** menu.

1. Click **Start > Programs > Accessories > Hyper Terminal**.
2. When the following screen appears, ensure that the COM port is configured as shown below. Click **OK** when finished with configuration.



- Log in to the console. After the terminal has been connected to the device, power on the managed switch. The terminal displays “running testing procedures”.

When the following dialog box in Figure 4 below appears, type the factory default user name “admin” and password “admin”.

User name: admin
Password: admin

Figure 3: Console login screen

```
Press ENTER to get started
Username: admin
Password:
NS3500-24T-4S#
```

Note:

- For security purposes, change and memorize the new password after this first setup.
- Only commands in lowercase letters are accepted in the console interface.

Configuring the IP address

The managed switch is shipped with the default IP address shown below:

IP Address: **192.168.0.100**
Subnet Mask: **255.255.255.0**

To check the current IP address or modify a new IP address for the managed switch, use the following procedures:

Display of the current IP Address

- At the “#” prompt, type “show ip interface brief”.
- The screen displays the current IP address.

Figure 4: IP information screen

```
Press ENTER to get started
Username: admin
Password:
NS3500-24T-4S# show ip interface brief
Vlan Address Method Status
-----
1 192.168.0.100/24 Manual UP
```

Configuration of the IP address

- At the “#” prompt, type the following command and press Enter as shown in Figure 5.

```
NS3500-24T-4S # configure terminal
NS3500-24T-4S (config)# interface vlan 1
NS3500-24T-4S (config-if-vlan)# ip address 192.168.1.100
255.255.255.0
```

The previous command would apply the following settings for the managed switch.

IP Address: 192.168.1.100

Subnet Mask: 255.255.255.0

Figure 5: Configuring the IP address screen

```
Press ENTER to get started
Username: admin
Password:
NS3500-24T-4S # configure terminal
NS3500-24T-4S (config)# interface vlan 1
NS3500-24T-4S (config-if-vlan)# ip address 192.168.1.100 255.255.255.0
```

- Repeat step 1 to check if the IP address has changed.

Store the current switch configuration

- At the “#” prompt, type the following command and press Enter.

```
# copy running-config startup-config
```

Figure 6: Saving current configuration command screen

```
Press ENTER to get started
Username: admin
Password:
NS3500-24T-4S # configure terminal
NS3500-24T-4S (config)# interface vlan 1
NS3500-24T-4S (config-if-vlan)# ip address 192.168.1.100 255.255.255.0
NS3500-24T-4S (config-if-vlan)#
NS3500-24T-4S (config-if-vlan)# exit
NS3500-24T-4S (config)# exit
NS3500-24T-4S # copy running-config startup-config
Building configuration...
% Saving 1483 bytes to flash:startup-config
```

If the IP is successfully configured, the managed switch applies the new IP address setting immediately. Access the web interface of the managed switch through the new IP address.

Note: If unfamiliar with the console command or the related parameter, type “help” in the console to obtain the Help description.

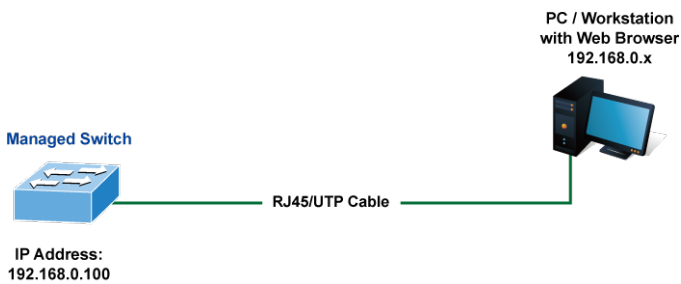
Starting web management

The section describes how to start up the web management function for the managed switch. Note that the managed switch is configured through an Ethernet connection. Ensure that the manager computer is set to the same IP subnet address.

For example, if the default IP address of the managed switch is 192.168.0.100, then the manager computer should be set to

192.168.0.x (where x is a number between 1 and 254, except 100), and the default subnet mask is 255.255.255.0.

Figure 7: IP management diagram



Logging in to the managed switch

1. Use the Internet Explorer 8.0 or later Web browser and type the IP address `http://192.168.0.100` (the factory-default IP address) to access the Web interface.
2. When the following dialog box appears, enter the default user name “admin” and password “admin” (or the password you have changed before) as shown in Figure 9 below.

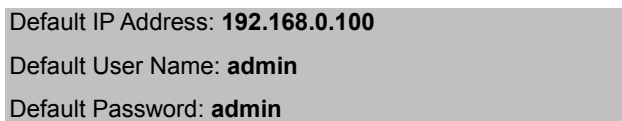
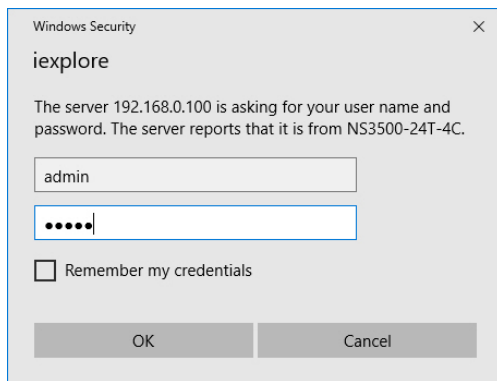
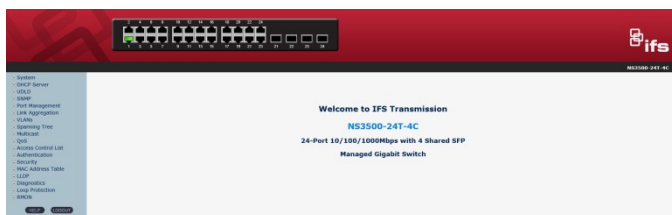


Figure 8: Login screen

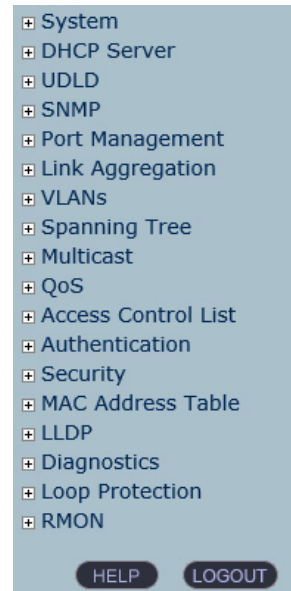


3. After typing the password, the main screen appears as shown in Figure 10 below.

Figure 9: Main web interface screen



4. The switch menu on the left side of the web page permits access to all the functions and status provided by the managed switch.



Refer to the User Manual for further information about using the web management interface.

Note: For security purposes, change and memorize the new password after this first setup.

Saving the configuration

The running configuration file is stored in the RAM of the managed switch. In the current version, the running configuration sequence of running-config can be saved from the RAM to FLASH by executing the Save Startup Config command. After doing this, the running configuration sequence becomes the startup configuration file (i.e., the saved configuration).

To save all applied changes and set the current configuration as a startup configuration, the startup-configuration file is loaded automatically across a system reboot.

1. Click **System > Save Startup Config**.



2. Click the **Save Configuration** button.

Save Running Configuration to startup-config

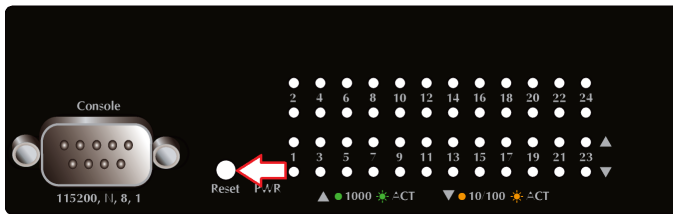
Please note: The generation of the configuration file may be time consuming, depending on the amount of non-default configuration.

Save Configuration

Resetting the switch to default

To reset the IP address to the default IP address “192.168.0.100” and the user password to factory default mode (default password is “admin”), press the hardware reset button on the front panel for about 10 seconds. After the device is rebooted, log in to the management Web interface within the same subnet of 192.168.0.xx and default password. Note that all the previous setups are erased after the factory default reset.

Figure 10: Reset button



Contact information

North America

T +1 855.286.8889

E techsupport@interlogix.com

W www.interlogix.com/support

Latin America

T +1 561-998-6114

E latam@interlogix.com

Europe, Middle East, and Africa

W Select *Contact Us* at www.utcssecurityproducts.eu

Australia

E security.tech.support@interlogix.com.au