

PSC series power supply

Switch mode power supply 12VDC, IP67



CODE: **PSC12010** v1.0/VIII
 TYPE: **PSC 12V/1A/55MM** switch mode power supply

EN*

Features:

- power output 1A/12VDC*
- universal AC voltage range 90÷264V
- high efficiency 78%
- standby power <0,3W
- efficiency class: V
- IP 67 enclosure
- protections:
 - short-circuit protection SCP
 - surge protection (AC input)
 - overload protection OLP
- warranty – 2 year from the production date



DESCRIPTION

The PSU is intended for 230V AC mains supply to CCTV cameras that require stabilised voltage of **12V DC**. The PSU can be assembled in installation boxes, surface or flush-mounted, or fitted with 3mm screws. The unit is protected against a short circuit and an overload and a surge.

SPECIFICATIONS

| | |
|--------------------------------------|--|
| Supply voltage | 90 ÷ 264 V AC 50÷60Hz |
| Current consumption | 0,13A@230VAC max. |
| Supply power | 12W max. |
| Efficiency | 78% |
| Output voltage | 12VDC |
| Output current $t_{AMB}<30^{\circ}C$ | 1A - refer to graph 1. |
| Output current $t_{AMB}=40^{\circ}C$ | 0,7A - refer to graph 1. |
| Ripple voltage | 100mV p-p max. |
| Short-circuit protection SCP | electronic, automatic recovery |
| Overload protection OLP | 105-150% of power supply, automatic recovery |
| Overvoltage protection | varistor (AC input) |
| IP protection class | IP67 |
| Operation conditions | temperature $0^{\circ}C\div40^{\circ}C$ relative humidity 20%...90% |
| Dimensions (LxWxH) | 50 x 48 x 25 [mm] |
| Net/gross weight | 0,09kg / 0,125kg |
| Protection class PN-EN 60950-1:2007 | II (second) |
| Length of DC cable | 0,5 m + plug DC5,5/2,1 female |
| Length of AC cable | 0,3 m |
| Storage temperature | -20°C...+60°C |

* In order to extend the life of the power supply, the load current of 0,7A is recommended.

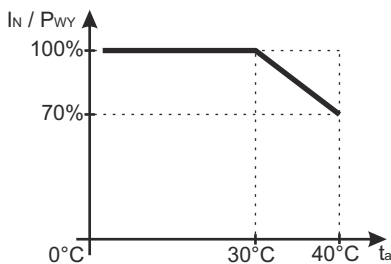


Chart 1.
Relation between output current and ambient temperature (instantaneous load).

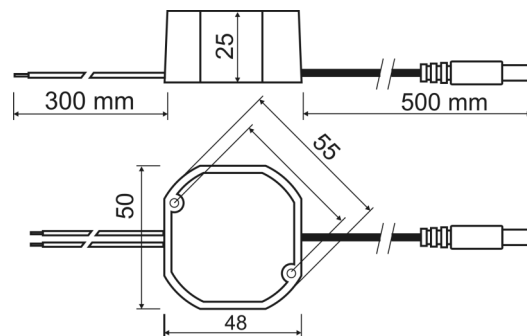
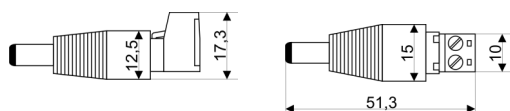


Fig.1 Mechanical view and dimensions of the PSU.

ACCESSORIES

ACCESSORIES :
 [1] adapter CABLE - PLUG DC 5,5/2,1 - code ML109



Available accessories for the power supplies are: fuse blocks and cable adapters. For details – visit www.pulsar.pl

* Refer to graph 1