



TVD-BB3A

TruVision Dome Bracket angled back box

Overview

TVD-BB3A back box for indoor and outdoor use. The bracket can be used with the TruVision dome cameras listed below.

Used for the following cameras:

Indoor Dome TruVision IP indoor mini dome:

PAL: PAL: TVD-N210V-2-P, TVD-N245V-2-P, TVDM1210V-2-P, TVD-M1225V-2-P, TVD-M1210V-2UP, TVD-M1225V-2U-P, TVD-M2210V-2-P, TVDM2225V-2-P, TVD-M3210V-2-P, TVD-M3225V-2-P, TVD-M5225V-4-P
NTSC: TVD-N210V-2-N, TVD-N245V-2-N, TVDM1210V-2-N, TVD-M1225V-2-N, TVD-M1210V-2UN, TVD-M1225V-2U-N, TVD-M2210V-2-N, TVDM2225V-2-N, TVD-M3210V-2-N, TVD-M3225V-2-N, TVD-M5225V-4-N

TruVision 11/31 series IP vandal dome:

PAL: TVD-1103, TVD-1104
NTSC: TVD-3103, TVD-3104

TruVision 12/32 series IP vandal dome:

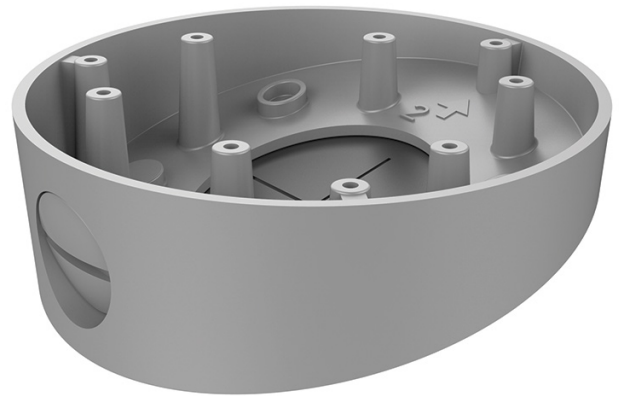
PAL: TVD-1201, TVD-1202
NTSC: TVD-3201, TVD-3202

TVD-24/44 Series HD-TVI Analog VF Dome:

PAL: TVD-2402, TVD-2404
NTSC: TVD-4402, TVD-4404

TruVision TVD-6/7 series analog vandal dome:

PAL: TVD-6120VE-2-P, TVD-6125VE-2-P, TVD-7120VE-2-P, TVD-7125VE-2-P
NTSC: TVD-6120VE-2-N, TVD-6125VE-2-N, TVD-7120VE-2-N, TVD-7125VE-2-N



Standard Features

- Suitable for the TruVision Dome
- Angled Back box
- Aluminum alloy

TVD-BB3A

TruVision Dome Bracket angled back box

Specifications

TVD-BB3A	
Dimensions:	136 × 42 mm (5.36 × 1.65 in.)
Weight:	237 g (0.52 lb.)
Construction:	Aluminum alloy
Color:	Grey color (Pantone 428c)

Ordering Information

Part No.	Description
TVD-BB3A	TruVision Dome Bracket angled back box

