



## TVB-2405

TruVision HD-TVI Analog Bullet Camera, PAL, 1080p, 2.8 to 12 mm

### Overview

The new TruVision line includes a comprehensive family of HD-TVI infrared (IR) cameras for stand-alone or integrated installations, designed for optimal image quality over existing coaxial cable.

Ideal for improving video quality of existing analog surveillance system installations ranging from convenience stores to retail mall parking lots, the TruVision HD-TVI line has the right cameras for your new or existing project and can help you stay within budget constraints without compromising security needs.

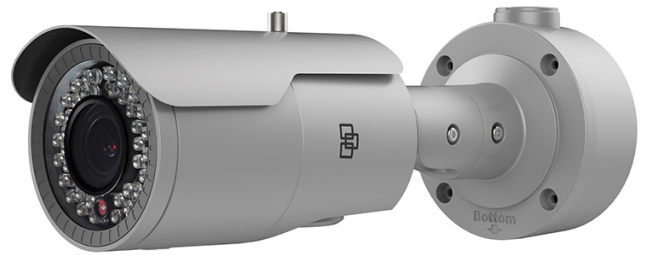
The cameras have true day/night capabilities, providing color images by day and black-and-white images under IR operation in low light applications. TruVision HD-TVI cameras are available with either fixed lens or varifocal lens or motorized lens

Form factors include box, dome, and traditional bullet cameras. Bullet models offer a familiar form factor that features a pre-installed wall mount with cable management. Bullet and domes are IP66 rated for outdoor installation and selected dome models are available with an IK10 vandal-rated enclosure.

All TruVision HD-TVI cameras are designed to install quickly and easily, right out of the box, so you can be up and running in no time.

### Installation

The bullet and dome provide motorized lens control which facilitates installation and image adjustment. From the TVR12HD/44HD the installer can remotely control the focal length and precisely adjust the camera focus, simplifying both installation and maintenance.



### Standard Features

- 1080p HD resolution
- HD-TVI technology for transmitting HD quality video over existing coax cable
- True day/night functionality and infrared illuminators with Smart IR function for capturing images in various lighting scenarios
- IR range of up to 40 m
- IP66 environmental rating
- Wide dynamic range
- 2.8 to 12 mm motorized lens
- Smart focus
- Dual power 12 VDC / 24 VAC
- Bracket included
- Provide OSD control via TruVision up the coax and built-in menu button

# TVB-2405

TruVision HD-TVI Analog Bullet Camera, PAL, 1080p, 2.8 to 12 mm

## Specifications

Camera	
Pick-up device:	1/3" Progressive Scan CMOS
Total pixels (H x V):	1920 × 1080
Effective pixels (H x V):	1920 × 1080
Resolution:	1080p
Sync. system:	Internal
S/N ratio:	More than 52 dB
Electronic shutter:	1/25 to 1/50,000 s
Day/Night:	True Day/Night
Motorized IR cut filter:	Yes
Color sensitivity:	0.01 Lux @ (F1.2, AGC ON), 0.014 Lux @ (F1.4, AGC ON)
B/W sensitivity:	0 Lux with IR on
Video output:	Dual HD-TVI or 960H
IR distance:	Up to 40 m
Lens type:	2.8 - 12 mm @ F1.4, Motorized
Wide dynamic range:	120 dB
Digital noise reduction:	3D DNR
OSD:	Built-in OSD button, TruVision Coax OSD control on both HD-TVI and 960H
Electrical	
Power source:	12 VDC / 24 VAC
Power consumption:	12 VDC: max. 12 W 24 VAC: max. 12 W
Current:	12 VDC: max. 1A 24 VAC: max. 0.5A
Environmental & Physical	
Weight:	1095 g (2.41 lbs.)
Dimensions:	105 × 94,7 × 301,4 mm (4.13 × 3.74 × 11.86 in.)
Operation temperature:	12VDC: -30 to +60° C (-22 to +140° F) 24VAC: -40° C to 60° C (-40° F to 140° F) with heater on
Storage temperature:	-20 to +70° C (-4 to +158° F)
Environmental rating:	IP66

## Ordering Information

Part No.	Description
TVB-2405	TruVision HD-TVI Analog Bullet Camera, PAL, 1080p, 2.8 to 12 mm motorized lens

