

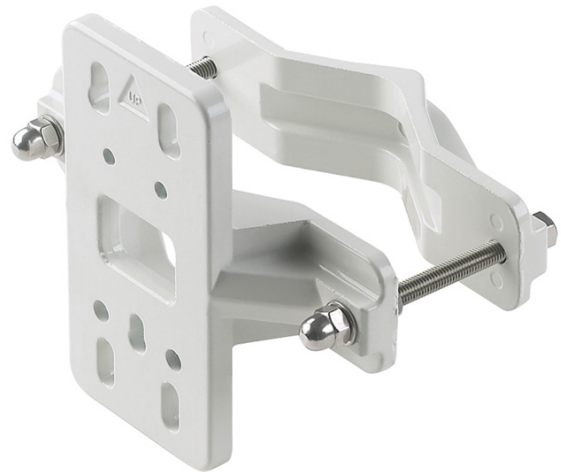


PA1

Pole adaptor for camera housing bracket

Overview

Universal bracket for pole mounting of one camera housings. The construction very robust, which provides a high load capacity. For mounting it on a pole, it can be done by either using screws or straps. Straps are not included



Standard Features

- Pole mount adapter for one camera housings
- Robust construction

PA1

Pole adaptor for camera housing bracket

Specifications

Maximum pole diameter	150	mm
Maximum load	20	kg
at a distance of 30 cm from the universal plate.		
Color	RAL9002	(off white)
Dimensions	180 x 80 x 40	mm (WxHxD)
Weight	200	g
Fits	CHOxxx	housings
	CHWxxx	housings
	CHFxxx	housings

Ordering Information

Part No.	Description
PA1	Pole adaptor for camera housing bracket

