

KAL775

700 Series Loop Isolator Unit

General

The KAL700 Series modules include a complete range of interfaces developed for I/O control on older KSA700 and new KFP-A addressable fire systems from Kilsen, installed in easy to install, IP55 housings. These modules allow the fire system to perform additional building management functions during fire situations. 125 I/O addresses are available on every fire panel loop in addition to 125 fire detector addresses.

KAL700 Loop Isolators

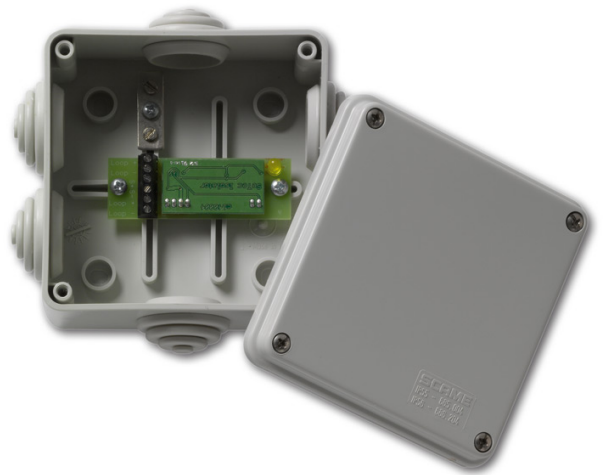
The KAL775 is a loop isolator for KSA700/KFP-A fire systems. It isolates the part of the loop cable with the short circuit or loop overload problem to allow the remainder of the devices on the loop to function normally. The KAL775 does not require an address on the loop. A local LED indicator warns of an isolated condition, and the unit automatically resets when the short circuit condition on the loop is removed.

Installation

Because the KAL775 does not require an address on the loop, it does not prohibit installation of the full 250 devices (125 sensors and 125 I/O units) allowable on the loop. It is designed for surface mount applications. An LED indication on the unit indicates that the isolation is in effect for easy fault finding.

Applications

The KAL775 is designed for use as a protection against short circuits or overloads on the KSA700/KFP-A fire panel loops. According to regulations, an isolator should always separate two fire zones, and no more than 32 devices may be connected between two isolator modules.



Standard Features

- EN54:17 and CPD certified
- Surface mount
- Requires no device address
- Loop powered
- Protects the loop against short circuit conditions
- Local status indication
- Automatic reset
- Part of a family of I/O modules consisting of:
 - Conventional zone monitors
 - Digital input modules
 - Extinguishing control modules
 - Loop Isolators
 - Manual call points
 - Relay and supervised output units
 - Fire door controllers

KAL775

700 Series Loop Isolator Unit

Specifications

Operating voltages	
Supply voltage	22-38 VDC
Isolation voltage	15.2 V
Reconnection voltage	16.4 V
Current consumption	
Quiescent	2 mA
Isolation	10 mA
Environmental	
Storage temperature	-10°C to +70°C
Operating temperature	-10°C to +50°C
Relative humidity (non condensing)	10-95 %
IP Rating	IP55
Physical	
Dimensions (L x W x H)	100 x 100 x 50 mm
Colour	Grey
Weight	165 g

Ordering Information

Part No.	Description
KAL775	700 Series Loop Isolator Unit