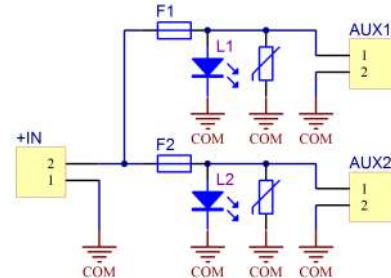
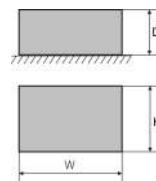


CODE: **AWZ599** v.1.0/II
NAME: **LB2/2x5A/4/FTA fuse module**

EN**



DESCRIPTION

The LB2/2x5A/4/FTA fuse module is designed for power distribution in low-voltage systems requiring voltage of **10V±30V DC** or **10V±24V AC** (e.g. buffer power supply, transformer etc.). It is fitted with the IN input for power supply and 2 independent power paths protected with 5A fuses. Fuse activation is indicated by switching off the appropriate LED: L1 for AUX1, L2 for AUX2 etc. Additionally, each output is protected with a varistor protecting the power supply and receivers against surges in the supply system. The module is adapted for connection of wires with a maximum cross-section of **4mm²**.

SPECIFICATIONS

Supply voltage	10V±30 V DC (-2%/+2%) 10V±24 V AC (-2%/+2%)
Output voltage	$U_{AUX} = U_{IN}$ (equal to supply voltage)
Current consumption	3mA ÷ 15mA @ $U_{in}=10 \div 30V$ DC
Number of power inputs	1 (IN terminals) - max. 4mm² cable
Number of power outputs	2 (AUX terminals) - max. 4mm² cable
Protections against:	
- a short circuit SCP	- 2 x 5A
- an overload OLP	- 2 x 5A
- a surge	- varistors
LED indication	green LED L1 ÷ L2 – status of the AUX1÷AUX2 outputs
F1 ÷ F2 fuses	F 5A
Operating conditions	II environmental class, -10°C ÷ 50°C
Dimensions	75 x 53 x 40 (WxHxD) [mm] (+/-2)
Installation	A mounting panel with an adhesive tape, mounting screws x 2 (holes Ø 3mm)
Connectors:	
- power supply input/output	Φ0,41÷2,59 (AWG 26-10), 0,5 ÷ 4mm ²
Net/gross weight	0,05kg / 0,09kg
Declarations, warranty	CE, RoHS, 2 year from the production date