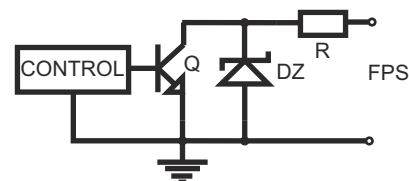
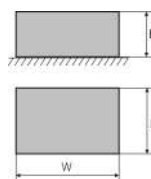


CODE: **AWZ588** v.1.0/II  
NAME: **LB4/AW/R fuse module 4x0.5A**

EN\*\*



Electrical diagram of the OC output.



Electrical diagram of the relay output.

## DESCRIPTION

The fuse module is intended for dividing power in low-voltage alarm systems (power distribution). It features IN input for supply power of: **10V±30V DC** or **10V±24V AC** (e.g. buffer PSU, transformer etc.). The LB4/AW/R module has four power outputs AUX1÷AUX4, secured separately. Each AUX output is protected against a short circuit (SCP) with a glass fuse (F 0,5A or F 1,0A) or a polymer fuse 0,5A and against surges – via varistors. Status of the outputs is indicated by four LEDs - L1÷L4. Fuse damage is indicated by an appropriate LED going out: L1 for AUX1 etc. In case of a failure, the FPS output changes its state into hi-Z and the  $L_{FPS}$  LED is illuminated and the relay contacts change their position. The FPS output can be used for a remote control of LB4/AW/R state, e.g. external optical indication.

## SPECIFICATIONS

|  |  |
|--|--|
| <b>Supply voltage</b>  | 10V±30 V DC (-2%/+2%)<br>10V±24 V AC (-2%/+2%)   |
| <b>Output voltage</b>  | $U_{AUX} = U_{IN}$ (equal to supply voltage)   |
| <b>Current consumption</b>   | 15mA÷ 42mA @ $U_{in}=10 \div 30$ V DC<br>37mA÷ 42mA @ $U_{in}=10\div 24$ V AC  |
| <b>Number of power inputs</b>  | 1 (a screw connector)  |
| <b>Number of power outputs</b>   | 4 (AUX terminals)  |
| <b>Protections against:</b><br>- a short circuit SCP<br>- an overload OLP<br>- a surge | - 4 x F 0,5A or 4x F 1,0A fuse<br>(manual replacement of the included fuse), or PTC 0,5A.<br>- varistors             |
| <b>LED indication</b>  | - green LED <b>L1 ÷ L4</b> – status of the AUX1÷AUX4 outputs<br>- red LED <b>L<sub>FPS</sub></b> – indicates failure |
| <b>F1 ÷ F4 fuses</b>   | F 0,5A or F 1,0A (included) or PTC 0,5A  |
| <b>Operating conditions</b>  | II environmental class, -10°C ÷ 50°C   |
| <b>Wymiary</b>   | 125 x 43 x 32 (WxHxD) [mm]<br>(115 x 40 x 30 dimensions of the panel)  |
| <b>Installation</b>  | a mounting panel with an adhesive tape, mounting screws x2 (holes 3mm)<br>or spacersx 4 (PCB fi=4,2 mm)              |
| <b>Connectors:</b><br>- of power output<br>- of power input                            | - screw connectors $\Phi 0,41\div 1,63$ (AWG 26-14)<br>- a screw connector $\Phi 0,41\div 1,63$ (AWG 26-14)          |
| <b>Net/gross weight</b>  | 0,06kg / 0,10kg  |
| <b>Declarations, warranty</b>  | CE, RoHS, 2 year from the production date  |