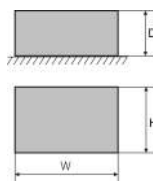
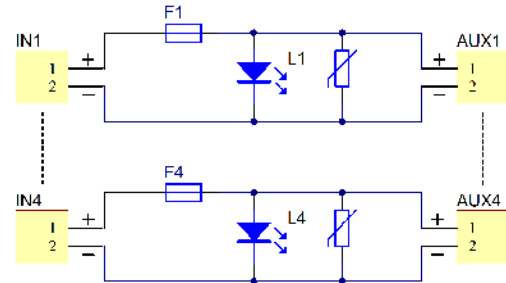


CODE: **AWZ533** v.2.1/V  
NAME: **LB4P/4x1,5A/FTA fuse module**

EN\*\*



## DESCRIPTION

The LB4P/4x1.5A/FTA fuse module is designed for power distribution in low-voltage systems requiring voltage of 10V±30V DC or 10V±24V AC (e.g. buffer power supply, transformer etc.). It has 4 independent, galvanically isolated power supply circuits protected with 1,5A fuses. Fuse activation is indicated by switching off the appropriate LED: L1 for AUX1, L2 for AUX2 etc. Additionally, each output is protected with a varistor protecting the power supply and receivers against surges in the supply system. The module is adapted for connection of wires with a maximum cross-section of 1mm<sup>2</sup>.

## SPECIFICATIONS

<b>Supply voltage</b>	10 V ÷ 30 V DC (-2%/+2%) 10 V ÷ 24 V AC (-2%/+2%)
<b>Output voltage</b>	$U_{AUX} = U_{IN}$ ( equal to supply voltage )
<b>Current consumption</b>	5 mA ÷ 30 mA @ $U_{IN} = 10 V \div 30 V$ DC
<b>Number of power inputs</b>	4 (IN terminals) – max. 1mm <sup>2</sup> cable
<b>Number of power outputs</b>	4 (AUX terminals) – max. 1mm <sup>2</sup> cable
<b>Protections against:</b>	
- a short circuit SCP	- 4 x 1,5A
- an overload OLP	- 4 x 1,5A
- a surge	- varistors
<b>LED indication</b>	Green L1 ÷ L4 LEDs – AUX1 ÷ AUX4 output status
<b>Fuses F1 ÷ F4</b>	F 1,5A
<b>Operating conditions</b>	II environmental class, -10°C ÷ 50°C
<b>Dimensions</b>	100 x 43 x 23 (WxHxD)
<b>Installation</b>	A mounting panel with an adhesive tape, mounting screws x2 (holes Ø 3mm)
<b>Connectors</b>	Φ0,41±1,63 (AWG 26-14), 0,2 ÷ 1mm <sup>2</sup>
<b>Net/gross weight</b>	0,05kg / 0,08kg
<b>Declarations, warranty</b>	CE, RoHS, 2 year from the production date